

## 36-2005: Anti-P-Cadherin (CDH3) Monoclonal Antibody(Clone :12H6)

<b>Clonality :</b>	Monoclonal
<b>Clone Name :</b>	12H6
<b>Application :</b>	FACS,IF,WB
<b>Reactivity :</b>	Human
<b>Gene :</b>	CDH3
<b>Gene ID :</b>	1001
<b>Uniprot ID :</b>	P22223
<b>Alternative Name :</b>	Cadherin 3 type 1; Cadherin-3; Cadp; Calcium dependent adhesion protein placental; CDH3; CDHP; HJMD; P-cadherin (Placental); PCAD; Placental cadherin
<b>Isotype :</b>	Mouse IgG1, kappa
<b>Immunogen Information :</b>	Recombinant human P-cadherin fusion protein

### Description

Recognizes a protein of 116kDa, identified as P-Cadherin-1 (CDH3). It is a calcium-dependent cell-cell adhesion glycoprotein comprised of five extracellular cadherin repeats, a transmembrane region and a highly conserved cytoplasmic tail. This gene is located in a six-cadherin cluster in a region on the long arm of chromosome 16 that is involved in loss of heterozygosity events in breast and prostate cancer. In addition, aberrant expression of this protein is observed in cervical adenocarcinomas. Mutations in this gene have been associated with congenital hypotrichosis with juvenile macular dystrophy.

### Product Info

<b>Amount :</b>	20 µg / 100 µg
<b>Content :</b>	200µg/ml of Ab Purified from Bioreactor Concentrate by Protein A/G. Prepared in 10mM PBS with 0.05% BSA & 0.05% azide. Also available WITHOUT BSA & azide at 1.0mg/ml.
<b>Storage condition :</b>	Antibody with azide - store at 2 to 8°C. Antibody without azide - store at -20 to -80°C. Antibody is stable for 24 months.

### Application Note

Flow Cytometry (1-2ug/million cells); Immunofluorescence (1-2ug/ml); Western Blot (1-2ug/ml)

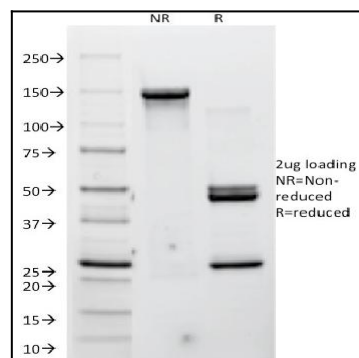


Fig. 1 :SDS-PAGE Analysis Purified P-Cadherin Mouse Monoclonal Antibody (12H6). Confirmation of Integrity and Purity of Antibody.