

37-1372: Mouse BTLA Recombinant Protein (Fc Tag)(Discontinued)

Reactivity : Mouse
Alternative Name : A630002H24 Protein, Mouse

Description

Source : HEK293 Cells

BTLA is a inhibitory molecule which belongs to the Ig superfamily. It down-modulates immune responses. As such, reagents that regulate the binding of BTLA to its ligand or alter BTLA signaling have significant therapeutic promise. BTLA is crucial to understand the mechanism(s) of action of these antibodies before attempting clinical applications. BTLA is not expressed by naive T cells, but it is induced during activation and remains expressed on T helper type 1 (T(H)1) but not T(H)2 cells. BTLA is a third inhibitory receptor on T lymphocytes with similarities to cytotoxic T lymphocyte-associated antigen 4 (CTLA-4) and programmed death 1 (PD-1). Cancer Immunotherapy Co-inhibitory Immune Checkpoint Targets Immune Checkpoint Immune Checkpoint Targets Immunotherapy Targeted Therapy

Product Info

Amount : Mouse BTLA Recombinant Protein (Fc Tag)(Discontinued) / 100 µg
Purification : > 90 % as determined by SDS-PAGE
Content : Formulation Lyophilized from sterile PBS, pH 7.4
Normally 5 % - 8 % trehalose, mannitol and 0.01% Tween80 are added as protectants before lyophilization.
Storage condition : Store it under sterile conditions at -20°C to -80°C. It is recommended that the protein be aliquoted for optimal storage. Avoid repeated freeze-thaw cycles.
Amino Acid : Met1-Gly176

Application Note

Immobilized mouse BTLA-Fc at 10 Åµg/ml (100 ÅµL/well) can bind biotinylated mouse HVEM-Fch, The EC50 of biotinylated mouse HVEM-Fch is 15.7-36.7 ng/ml.

Endotoxin :< 1.0 EU per Åµg of the protein as determined by the LAL method

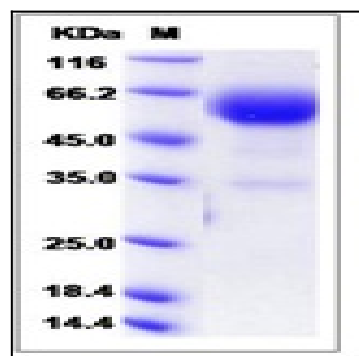


Fig 1: Mouse BTLA Recombinant Protein (Fc Tag)