

37-1368: Mouse B7-DC / PD-L2 / CD273 Recombinant Protein (Fc Tag)(Discontinued)

Reactivity : Mouse

Alternative Name : B7-DC Protein, Mouse; Btdc Protein, Mouse; F730015O22Rik Protein, Mouse; PD-L2 Protein, Mouse

Description

Source : HEK293 Cells

Programmed death ligand 2 (PD-L2), also referred to as B7-DC and CD273, is a member of the B7 family of proteins including B7-1, B7-2, B7-H2, B7-H1 (PD-L1), and B7-H3. PD-L2 is a type I membrane protein and structurally consists of an extracellular region containing one V-like and one C-like Ig domain, a transmembrane region, and a short cytoplasmic domain. PD-L2 is expressed on antigen presenting cells, placental endothelium and medullary thymic epithelial cells, and can be induced by LPS in B cells, INF- γ in monocytes, or LPS plus IFN- γ in dendritic cells. The CD28 and B7 protein families are critical regulators of immune responses. PD-L2 and PD-L1 are two ligands for PD-1, member of the CD28/CTLA4 family expressed on activated lymphoid cells, and thus provide signals for regulating T cell activation and immune tolerance. The interaction of B7-DC/PD-1 exhibited a 2-6-fold higher affinity compared with the interaction of B7-H1/PD-1. Cancer Immunotherapy Co-inhibitory Immune Checkpoint Targets Immune Checkpoint Immune Checkpoint Detection: Antibodies Immune Checkpoint Detection: ELISA Antibodies Immune Checkpoint Detection: FCM Antibodies Immune Checkpoint Detection: WB Antibodies Immune Checkpoint Proteins Immune Checkpoint Targets Immunotherapy Targeted Therapy

Product Info

Amount : L2 / CD273 Recombinant Protein (Fc Tag)(Discontinued) / 200 μ g

Purification : > 95 % as determined by SDS-PAGE

Content : Formulation Lyophilized from sterile PBS, pH 7.4
Normally 5 % - 8 % trehalose, mannitol and 0.01% Tween80 are added as protectants before lyophilization.

Storage condition : Store it under sterile conditions at -20°C to -80°C. It is recommended that the protein be aliquoted for optimal storage. Avoid repeated freeze-thaw cycles.

Amino Acid : Met1-Arg219

Application Note

1. Measured by its binding ability in a functional ELISA. 2. Immobilized human PD1-His at 10 μ g/mL (100 μ L/well) can bind mouse PD-L2-Fc, The EC50 of mouse PD-L2-Fc is 0.95 μ g/mL.

Endotoxin :< 1.0 EU per μ g of the protein as determined by the LAL method

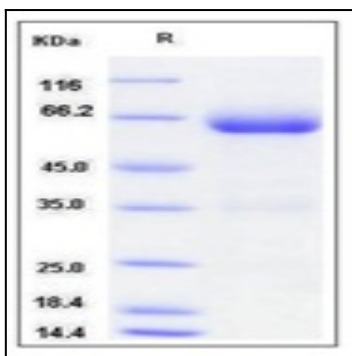


Fig 1: Mouse B7-DC / PD-L2 / CD273 Recombinant Protein (Fc Tag)