

## 37-1366: Mouse CD302 / CLEC13A Recombinant Protein (Fc Tag)(Discontinued)

**Reactivity :** Mouse

**Alternative Name :** 1110055L24Rik Protein, Mouse; A1159627 Protein, Mouse

### Description

#### Source : HEK293 Cells

CD32/CLEC13A (C-type lectin domain family 13 member A), also known as C-type lectin receptor DCL-1, is a type I transmembrane C-type lectin DCL-1/CD32. DCL-1 protein was highly conserved among the human, mouse, and rat orthologs. DCL-1 ectodomain contains only one CRD, whereas other type I transmembrane C-type lectins contain more than one domain (e.g. selectins and MMR). DCL-1 CP contains several putative motifs, including a Tyr-based internalization, a cluster of acidic amino acids, and Ser and Tyr phosphorylation motifs, suggesting that DCL-1 CP mediates not only endocytosis and late endosome targeting but also signaling. DCL-1 may be another cell/matrix adhesion receptor integrated in cell adhesion complexes and that DCL-1 dysfunction may affect APC adhesion and migration, causing suppression of APC function.

### Product Info

**Amount :** Mouse CD302 / CLEC13A Recombinant Protein (Fc Tag)(Discontinued) / 100 µg

**Purification :** > 93 % as determined by SDS-PAGE

**Content :** Formulation Lyophilized from sterile PBS, pH 7.4  
Normally 5 % - 8 % trehalose, mannitol and 0.01% Tween80 are added as protectants before lyophilization.

**Storage condition :** Store it under sterile conditions at -20°C to -80°C. It is recommended that the protein be aliquoted for optimal storage. Avoid repeated freeze-thaw cycles.

**Amino Acid :** Met1-His156

### Application Note

Endotoxin : < 1.0 EU per µg of the protein as determined by the LAL method

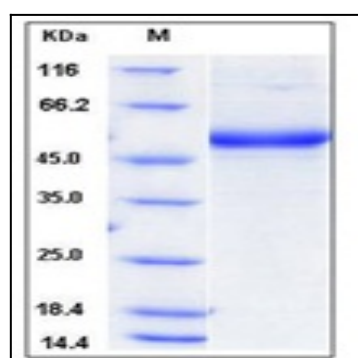


Fig 1: Mouse CD302 / CLEC13A Recombinant Protein (Fc Tag)