

## 37-1365: Mouse EphA6 / EHK-2 Recombinant Protein (Fc Tag)(Discontinued)

**Reactivity :** Mouse

**Alternative Name :** Ehk2 Protein, Mouse; Hek12 Protein, Mouse; m-ehk2 Protein, Mouse

### Description

#### Source : HEK293 Cells

Ephrin type-A receptor 6, also known as EphA6 or EHK2, belongs to the ephrin receptor subfamily of the protein-tyrosine kinase family which 16 known receptors (14 found in mammals) are involved: EPHA1, EPHA2, EPHA3, EPHA4, EPHA5, EPHA6, EPHA7, EPHA8, EPHA9, EPHA1, EPHB1, EPHB2, EPHB3, EPHB4, EPHB5, EPHB6. The Eph family of receptor tyrosine kinases (comprising EphA and EphB receptors) has been implicated in synapse formation and the regulation of synaptic function and plasticity<sup>6</sup>. Eph receptor-mediated signaling, which is triggered by ephrins<sup>7</sup>, probably modifies the properties of synapses during synaptic activation and remodeling. Ephrin receptors are components of cell signalling pathways involved in animal growth and development, forming the largest sub-family of receptor tyrosine kinases (RTKs). Ligand-mediated activation of Ephs induce various important downstream effects and Eph receptors have been studied for their potential roles in the development of cancer. In the vomeronasal system, Ephrin-A5/EphA6 interactions mediate attraction or adhesion rather than repulsion.

### Product Info

**Amount :** 2 Recombinant Protein (Fc Tag)(Discontinued) / 200 µg

**Purification :** > 90 % as determined by SDS-PAGE

**Content :** Formulation Lyophilized from sterile PBS, pH 7.4  
Normally 5 % - 8 % trehalose, mannitol and 0.01% Tween80 are added as protectants before lyophilization.

**Storage condition :** Store it under sterile conditions at -20°C to -80°C. It is recommended that the protein be aliquoted for optimal storage. Avoid repeated freeze-thaw cycles.

**Amino Acid :** Met1-Gln546

### Application Note

Measured by its binding ability in a functional ELISA . Immobilized mouse EphrinA3 at 1 µg/ml (100 µL/well) can bind mouse EPHA6 / chimera with a linear ranger of 6.25-400 ng/ml.

Endotoxin :< 1.0 EU per µg of the protein as determined by the LAL method

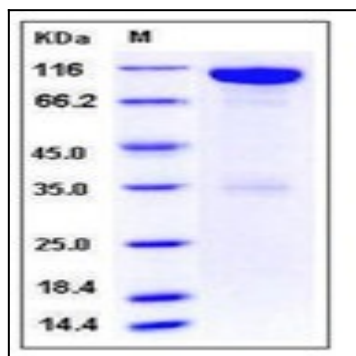


Fig 1: Mouse EphA6 / EHK-2 Recombinant Protein (Fc Tag)