

37-1356: Mouse Ephrin-A2 / EFNA2 Recombinant Protein (His Tag)(Discontinued)

Reactivity : Mouse

Alternative Name : CEK7L Protein, Mouse; Elf1 Protein, Mouse; Epl6 Protein, Mouse; Eplg6 Protein, Mouse; Lerk6 Protein, Mouse

Description

Source : HEK293 Cells

Ephrin-A2 also known as EFNA2 or EPH-related receptor tyrosine kinase ligand 6, is a member of the ephrin family. The Eph family receptor interacting proteins (ephrins) are a family of proteins that serve as the ligands of the Eph receptor, which compose the largest known subfamily of receptor protein-tyrosine kinases (RTKs). Ephrin-A2 and their Eph family of receptor tyrosine kinases are expressed by cells of the SVZ. Eph/ephrin interactions are implicated in axon guidance, neural crest cell migration, establishment of segmental boundaries, and formation of angiogenic capillary plexi. Ephrin subclasses are further distinguished by their mode of attachment to the plasma membrane: ephrin-A ligands bind EphA receptors and are anchored to the plasma membrane via a glycosylphosphatidylinositol (GPI) linkage, whereas ephrin-B ligands bind EphB receptors and are anchored via a transmembrane domain. Ephrin-A2 regulates the position-specific affinity of limb mesenchyme and is involved in cartilage pattern formation in the limb.

Product Info

Amount : A2 / EFNA2 Recombinant Protein (His Tag)(Discontinued) / 100 µg

Purification : > 94 % as determined by SDS-PAGE

Content : Formulation Lyophilized from sterile PBS, pH 7.4
Normally 5 % - 8 % trehalose, mannitol and 0.01% Tween80 are added as protectants before lyophilization.

Storage condition : Store it under sterile conditions at -20°C to -80°C. It is recommended that the protein be aliquoted for optimal storage. Avoid repeated freeze-thaw cycles.

Amino Acid : Met1-Asn184

Application Note

1. Measured by its binding ability in a functional ELISA. 2. Immobilized mouse EFNA2-his at 10 Åµg/mL (100 ÅµL/well) can bind mouse EphA4-Fc . The EC50 of mouse EphA4-Fc is 0.57 Åµg/mL.
Endotoxin :< 1.0 EU per Åµg of the protein as determined by the LAL method.
Other pack size also available.

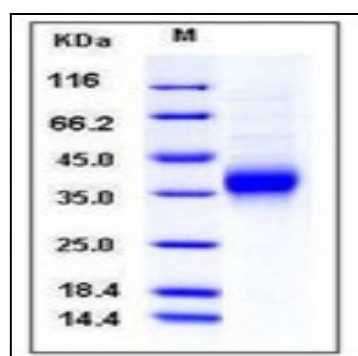


Fig 1: Mouse Ephrin-A2 / EFNA2 Recombinant Protein (His Tag)