

37-1354: Mouse CTLA4 / CD152 Recombinant Protein (Fc Tag)(Discontinued)

Reactivity : Mouse

Alternative Name : Cd152 Protein, Mouse; Ctl-4 Protein, Mouse; Ly-56 Protein, Mouse

Description

Source : HEK293 Cells

Cytotoxic T-lymphocyte protein 4, also known as CTLA4 and CD152, is a single-pass type I membrane protein and a member of the immunoglobulin superfamily. It is the second member of the CD28 receptor family. The ligands or counterreceptors for these two proteins are the B7 family members, CD8 (B7-1) and CD86 (B7-2). CTLA4 transmits an inhibitory signal to T cells, whereas CD28 transmits a stimulatory signal. Intracellular CTLA4 is also found in regulatory T cells and may play an important role in their functions. CD152 or cytotoxic T lymphocyte antigen-4 (CTLA-4) is an essential receptor involved in the negative regulation of T cell activation. Because of its profound inhibitory role, CD152 has been considered a sound susceptible candidate in autoimmunity and a persuasive target for cancer immunotherapy. In particular, recent evidence suggests that CD152 is also important in the homeostasis and function of a population of suppressive cells, termed regulatory T cells (Treg). Cancer Immunotherapy Co-inhibitory Immune Checkpoint Targets CTLA4 / CD152 Immune Checkpoint Proteins Immune Checkpoint Immune Checkpoint Detection: Antibodies Immune Checkpoint Detection: ELISA Antibodies Immune Checkpoint Detection: IP Antibodies Immune Checkpoint Detection: WB Antibodies Immune Checkpoint Proteins Immune Checkpoint Targets Immunotherapy Targeted Therapy

Product Info

Amount : Mouse CTLA4 / CD152 Recombinant Protein (Fc Tag)(Discontinued) / 200 µg

Purification : > 95 % as determined by SDS-PAGE

Content : Formulation Lyophilized from sterile PBS, pH 7.4
Normally 5 % - 8 % trehalose, mannitol and 0.01% Tween80 are added as protectants before lyophilization.

Storage condition : Store it under sterile conditions at -20°C to -80°C. It is recommended that the protein be aliquoted for optimal storage. Avoid repeated freeze-thaw cycles.

Amino Acid : Met1-Phe162

Application Note

Measured by its ability to inhibit IL-2 secretion by stimulated Jurkat human acute T cell leukemia cells. The ED50 for this effect is 0.05-0.3 µg/mL when stimulated with 1 µg/mL Recombinant Human B7-1/CD80.

Endotoxin :< 1.0 EU per µg of the protein as determined by the LAL method

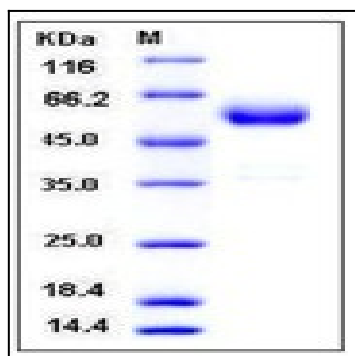


Fig 1: Mouse CTLA4 / CD152 Recombinant Protein (Fc Tag)

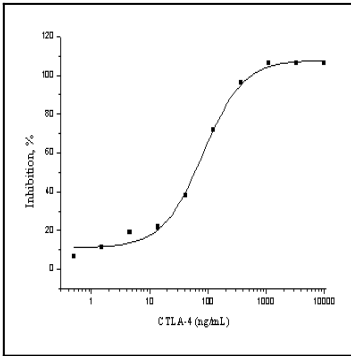


Fig 2: Mouse CTLA4 / CD152 Recombinant Protein (Fc Tag) measured by its ability to inhibit IL-2 secretion by stimulated Jurkat human acute T cell leukemia cells.