

37-1349: Mouse CD48 / SLAMF2 / BCM1 Recombinant Protein (His Tag)(Discontinued)

Reactivity : Mouse
Alternative Name : AI449234 Protein, Mouse; AW610730 Protein, Mouse; Bcm-1 Protein, Mouse; BCM1 Protein, Mouse; BLAST Protein, Mouse; BLAST-1 Protein, Mouse; BLAST1 Protein, Mouse; MEM-102 Protein, Mouse; Sgp-60 Protein, Mouse; SLAMF2 Protein, Mouse

Description

Source : HEK293 Cells

Cluster of Differentiation 48 (CD48), also known as SLAMF2, BCM-1 and BLAST-1, is a GPI-linked protein belonging to the CD2 subfamily of immunoglobulin superfamily molecules. CD2 and 2B4 (CD244) are known ligands for CD48. CD48 protein is expressed on most lineage-committed hematopoietic cells but not on hematopoietic stem cells or multipotent hematopoietic progenitors. CD48 protein performs biological functions in a variety of processes including adhesion, pathogen recognition, cellular activation, and cytokine regulation, and emerges as a critical effector molecule in immune responses. Cancer Immunotherapy Co-inhibitory Immune Checkpoint Targets Immune Checkpoint Immune Checkpoint Detection: Antibodies Immune Checkpoint Detection: ELISA Antibodies Immune Checkpoint Detection: FCM Antibodies Immune Checkpoint Detection: ICC Antibodies Immune Checkpoint Detection: IHC Antibodies Immune Checkpoint Detection: IP Antibodies Immune Checkpoint Detection: WB Antibodies Immune Checkpoint Proteins Immune Checkpoint Targets Immunotherapy Targeted Therapy

Product Info

Amount : Mouse CD48 / SLAMF2 / BCM1 Recombinant Protein (His Tag)(Discontinued) / 100 µg
Purification : > 85 % as determined by SDS-PAGE
Content : Formulation Lyophilized from sterile PBS, pH 7.4
 Normally 5 % - 8 % trehalose, mannitol and 0.01% Tween80 are added as protectants before lyophilization.
Storage condition : Store it under sterile conditions at -20°C to -80°C. It is recommended that the protein be aliquoted for optimal storage. Avoid repeated freeze-thaw cycles.
Amino Acid : Met1-Arg216

Application Note

1. Measured by its ability to bind human 2B4 in a functional ELISA. 2. Measured by its ability to bind biotinylated recombinant mouse CD2 in a functional ELISA.
 Endotoxin :< 1.0 EU per µg of the protein as determined by the LAL method

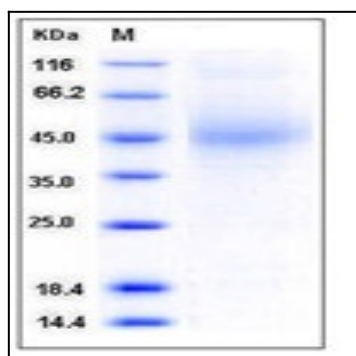


Fig 1: Mouse CD48 / SLAMF2 / BCM1 Recombinant Protein (His Tag)