

37-1333: Mouse CD5L / CD5 antigen-like Recombinant Protein (His Tag)(Discontinued)

Reactivity : Mouse

Alternative Name : 42010 Protein, Mouse; AAC-11 Protein, Mouse; AI047839 Protein, Mouse; Api6 Protein, Mouse; CT2 Protein, Mouse; Pdp Protein, Mouse; Sp-alpha Protein, Mouse

Description

Source : HEK293 Cells

CD5L, also known as CD5 antigen-like, is a soluble protein belonging to group B of the scavenger receptor cysteine-rich (SRCR) superfamily and contains three SRCR domains. It is a secreted glycoprotein and expressed by macrophages present in lymphoid tissues (spleen, lymph node, thymus, and bone marrow). It binds to myelomonocytic and lymphoid cells and may play an important role in the regulation of the innate and adaptive immune systems. CD5L functions as a pattern recognition molecule by binding both lipoteichoic acid (LTA) on Gram positive and lipopolysaccharide (LPS) on Gram negative bacteria. and the SRCR domain 1 of CD5L retains both the LPS and LTA binding activities. In addition, it is revealed that CD5L seems to play a role as an inhibitor of apoptosis.

Product Info

Amount : like Recombinant Protein (His Tag)(Discontinued) / 100 µg

Purification : > 98 % as determined by SDS-PAGE

Content : Formulation Lyophilized from sterile PBS, pH 7.4
Normally 5 % - 8 % trehalose, mannitol and 0.01% Tween80 are added as protectants before lyophilization.

Storage condition : Store it under sterile conditions at -20°C to -80°C. It is recommended that the protein be aliquoted for optimal storage. Avoid repeated freeze-thaw cycles.

Amino Acid : Met1-Val352

Application Note

Endotoxin :< 1.0 EU per µg of the protein as determined by the LAL method

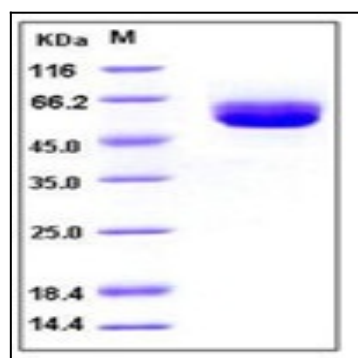


Fig 1: Mouse CD5L / CD5 antigen-like Recombinant Protein (His Tag)