

## 37-1332: Mouse Arylsulfatase A / ARSA Recombinant Protein (His Tag)(Discontinued)

**Reactivity :** Mouse

**Alternative Name :** As-2 Protein, Mouse; AS-A Protein, Mouse; As2 Protein, Mouse; ASA Protein, Mouse; AW212749 Protein, Mouse; TISP73 Protein, Mouse

### Description

#### Source : HEK293 Cells

Arylsulfatase A (ARSA) is synthesized as a 52KDa lysosomal enzyme. It is a member of the sulfatase family that is required for the lysosomal degradation of cerebroside-3-sulfate, a sphingolipid sulfate ester and a major constituent of the myelin sheet. Arylsulfatase A is activated by a required co- or posttranslational modification with the oxidation of cysteine to formylglycine. Metachromatic leukodystrophy (MLD) is a lysosomal storage disease in the central and peripheral nervous systems with severe and progressive neurological symptoms caused by the deficiency of Arylsulfatase A. Deficiency of this enzyme is also found in apparently healthy individuals, a condition for which the term pseudodeficiency is introduced. ARSA forms dimers after receiving three N-linked oligosaccharides in the endoplasmic reticulum, and then the dimers are transported to the Golgi where they receive mannose 6-phosphate recognition markers. And thus, ARSA is transported and delivered to dense lysosomes in a mannose 6-phosphate receptor-dependent manner. It has been shown that within the lysosomes, the ARSA dimers can oligomerize to an octamer in a pH-dependent manner. The ARSA deficiency leads to metachromatic leucodystrophy (MLD), a lysosomal storage disorder associated with severe and progressive demyelination in the central and peripheral nervous system. Additionally, the serum level of arylsulfatase A might be helpful in diagnosis of lung and central nervous system cancer.

### Product Info

**Amount :** Mouse Arylsulfatase A / ARSA Recombinant Protein (His Tag)(Discontinued) / 50 µg

**Purification :** > 97 % as determined by SDS-PAGE

**Content :** Formulation Lyophilized from sterile 25mM Tris, 0.15mM NaCl, pH 7.4

Normally 5 % - 8 % trehalose, mannitol and 0.01% Tween80 are added as protectants before lyophilization.

**Storage condition :** Store it under sterile conditions at -20°C to -80°C. It is recommended that the protein be aliquoted for optimal storage. Avoid repeated freeze-thaw cycles.

**Amino Acid :** Met1-Ser506

### Application Note

Measured by its ability to cleave p-Nitrocatechol Sulfate (PNCS) . The specific activity is >100 pmoles/min/Åµg .  
Endotoxin :< 1.0 EU per Åµg of the protein as determined by the LAL method

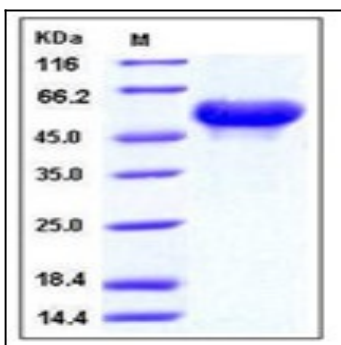


Fig 1: Mouse Arylsulfatase A / ARSA Recombinant Protein (His Tag)