

## 37-1330: Human TL1A / TNFSF15 Recombinant Protein (Fc Tag)(Discontinued)

**Reactivity :** Human

**Alternative Name :** TL1 Protein, TL1A Protein, VEGI Protein, VEGI192A Protein,

### Description

#### Source : HEK293 Cells

TL1A, also known as TNFSF15, is a cytokine that belongs to the tumor necrosis factor (TNF) ligand family. It is specifically expressed in endothelial cells. TL1A also can be detected in monocytes, placenta, lung, liver, kidney, skeletal muscle, pancreas, spleen, prostate, small intestine and colon. TL1A is a ligand for receptor TNFRSF25 and decoy receptor TNFRSF21/DR6. It mediates activation of NF-kappa-B. It also inhibits vascular endothelial growth and angiogenesis (in vitro). TL1A promotes activation of caspases and apoptosis. It is also found to inhibit endothelial cell proliferation, and thus may function as an angiogenesis inhibitor.

### Product Info

**Amount :** Human TL1A / TNFSF15 Recombinant Protein (Fc Tag)(Discontinued) / 100 µg

**Purification :** > 95 % as determined by SDS-PAGE.

**Content :** Formulation Lyophilized from sterile PBS, pH 7.4.  
Normally 5 % - 8 % trehalose, mannitol and 0.01% Tween80 are added as protectants before lyophilization.

**Storage condition :** Store it under sterile conditions at -20°C to -80°C. It is recommended that the protein be aliquoted for optimal storage. Avoid repeated freeze-thaw cycles.

**Amino Acid :** Leu72-Leu251

### Application Note

Endotoxin :< 1.0 EU per µg protein as determined by the LAL method.

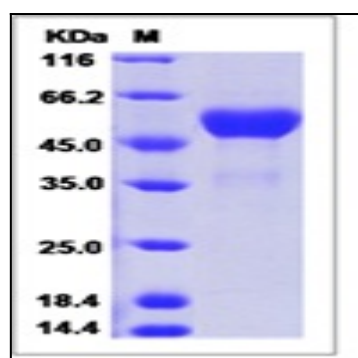


Fig 1: Human TL1A / TNFSF15 Recombinant Protein (Fc Tag)