

## 37-1314: Human LC3A / MAP1LC3A Recombinant Protein (His Tag)(Discontinued)

**Reactivity :** Human

**Alternative Name :** ATG8E Protein, LC3 Protein, LC3A Protein, MAP1ALC3 Protein, MAP1BLC3 Protein,

### Description

#### Source : E. coli

LC3A, also known as MAP1LC3A, is one of the light chain subunits that functions together with both MAP1A and/or MAP1B. MAP1A and MAP1B are microtubule-associated proteins which mediate the physical interactions between microtubules and components of the cytoskeleton. MAP1A and MAP1B each consist of a heavy chain subunit and multiple light chain subunits. As a light chain subunit, MAP1LC3A has an important part in neuronal development and in maintaining the balance between neuronal plasticity and rigidity. MAP1LC3A is expressed as two alternatively spliced isoforms that are expressed in testis, brain, heart, liver and skeletal muscle, but are absent in thymus and peripheral blood leukocytes.

### Product Info

**Amount :** Human LC3A / MAP1LC3A Recombinant Protein (His Tag)(Discontinued) / 1 mg

**Purification :** > 95 % as determined by SDS-PAGE

**Content :** Formulation Lyophilized from sterile PBS, pH 7.4  
Normally 5 % - 8 % trehalose, mannitol and 0.01% Tween80 are added as protectants before lyophilization.

**Storage condition :** Store it under sterile conditions at -20°C to -80°C. It is recommended that the protein be aliquoted for optimal storage. Avoid repeated freeze-thaw cycles.

**Amino Acid :** Met1-Phe121

### Application Note

Other pack size also available

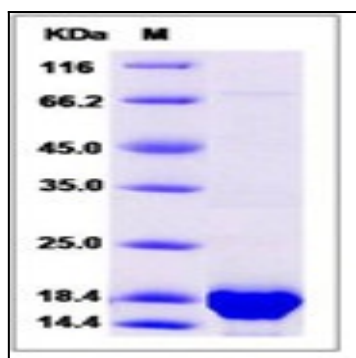


Fig 1: Human LC3A / MAP1LC3A Recombinant Protein (His Tag)