

## 37-1312: Human RASI-1 / MMP19 Recombinant Protein(Discontinued)

**Reactivity :** Human  
**Alternative Name :** MMP18 Protein, RASI-1 Protein,

### Description

#### Source : E. coli

MMP19, also known as RASI-1, is a member of the peptidase M1A family. It contains 4 hemopexin-like domains and is expressed in mammary gland, placenta, lung, pancreas, ovary, small intestine, spleen, thymus, prostate, testis colon, heart and blood vessel walls. It is a matrix metalloproteinase (MMP). Proteins of the MMP family are involved in the breakdown of extracellular matrix in normal physiological processes, such as embryonic development, reproduction, and tissue remodeling, as well as in disease processes, such as arthritis and metastasis. Most MMP's are secreted as inactive proproteins which are activated when cleaved by extracellular proteinases. MMP19 may play a role in pathological processes participating in rheumatoid arthritis (RA)-associated joint tissue destruction. Autoantigen anti-MMP19 are frequent in RA patients.

### Product Info

**Amount :** 1 / MMP19 Recombinant Protein(Discontinued) / 100 µg  
**Purification :** > 85 % as determined by SDS-PAGE  
**Content :** Formulation Lyophilized from sterile PBS, pH 7.4  
Normally 5 % - 8 % trehalose, mannitol and 0.01% Tween80 are added as protectants before lyophilization.  
**Storage condition :** Store it under sterile conditions at -20°C to -80°C. It is recommended that the protein be aliquoted for optimal storage. Avoid repeated freeze-thaw cycles.  
**Amino Acid :** Leu101-Gly256

### Application Note

Other pack size also available

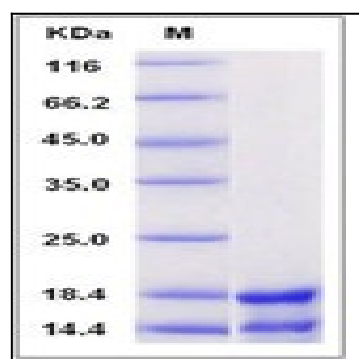


Fig 1: Human RASI-1 / MMP19 Recombinant Protein