

## 37-1302: Human STAT4 Recombinant Protein (His Tag)(Discontinued)

**Reactivity :** Human  
**Alternative Name :** SLEB11 Protein,

### Description

#### Source : Baculovirus-Insect Cells

High expression of STAT4 in gastric cancer predicted a better clinical outcome. STAT4 might be a useful biomarker to identify patients at high risk of recurrence after gastrectomy. Genetic variants in the transcription factor STAT4 are associated with increased susceptibility to systemic lupus erythematosus (SLE) and a more severe disease phenotype.

### Product Info

**Amount :** Human STAT4 Recombinant Protein (His Tag)(Discontinued) / 50 µg  
**Purification :** > 85 % as determined by SDS-PAGE  
**Content :** Formulation Supplied as sterile 20mM Tris, 500mM NaCl, pH 7.4, 20% glycerol, 0.5mM DTT  
Normally 5 % - 8 % trehalose, mannitol and 0.01% Tween80 are added as protectants before lyophilization.  
**Storage condition :** Store it under sterile conditions at -20°C to -80°C. It is recommended that the protein be aliquoted for optimal storage. Avoid repeated freeze-thaw cycles.  
**Amino Acid :** Met1-Glu748

### Application Note

Endotoxin :< 1.0 EU per µg of the protein as determined by the LAL method

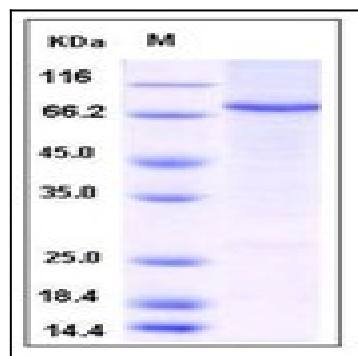


Fig 1: Human STAT4 Recombinant Protein (His Tag)