

## 37-1299: Human IGF-2 / IGF-II Recombinant Protein(Discontinued)

**Reactivity :** Human

**Alternative Name :** C11orf43 Protein, IGF-II Protein, PP9974 Protein,

### Description

#### Source : Yeast

Insulin-like growth factor 2 (IGF-2/IGF-II) is a member of the insulin family of polypeptide growth factors, which are involved in development and growth. It is an imprinted gene, expressed only from the paternal allele, and epigenetic changes at this locus are associated with Wilms tumour, Beckwith-Wiedemann syndrome, rhabdomyosarcoma, and Silver-Russell syndrome. IGF-2/IGF-II is a mediator of prolactin-induced alveologenesis; prolactin, IGF-2, and cyclin D1, all of which are overexpressed in breast cancers, are components of a developmental pathway in the mammary gland. IGF-2 and exhibited statistically significant, positive associations with colorectal cancer risk when cases were confined to those diagnosed within a relatively short time period after enrolment. Circulating IGF-2 and IGFBP-3 can serve as early indicators of impending colorectal cancer. IGF-2/IGF-II appears to be involved in the progression of many tumours. It binds to at least two different types of receptor: IGF type 1 (IGF 1R) and mannose 6-phosphate/IGF type 2 (M6-P/IGF 2R). Ligand binding to IGF 1R provokes mitogenic and anti-apoptotic effects. M6-P/IGF 2R has a tumour suppressor function—it mediates IGF 2 degradation. Mutation of M6-P/IGF 2R causes both diminished growth suppression and augmented growth stimulation. The aim of this study was to investigate the role of IGF 2 and its receptors (IGF 1R and IGF 2R) in human gastric cancer.

### Product Info

**Amount :** II Recombinant Protein(Discontinued) / 50 µg

**Purification :** > 95 % as determined by SDS-PAGE

**Content :** Formulation Lyophilized from sterile 50 mM Tris, pH 8.0. Normally 5 % - 8 % trehalose, mannitol and 0.01% Tween80 are added as protectants before lyophilization.

**Storage condition :** Store it under sterile conditions at -20°C to -80°C. It is recommended that the protein be aliquoted for optimal storage. Avoid repeated freeze-thaw cycles.

**Amino Acid :** Ala25-Glu91

### Application Note

Other pack size also available

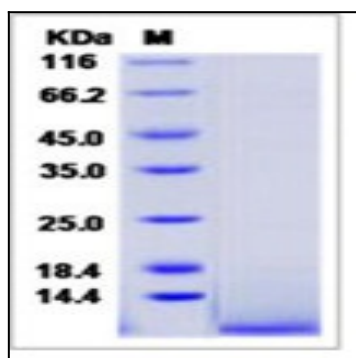


Fig 1: Human IGF-2 / IGF-II Recombinant Protein