

37-1281: Human CCL3 / Mip1a Recombinant Protein (His Tag)(Discontinued)

Reactivity : Human

Alternative Name : GOS19-1 Protein, LD78ALPHA Protein, MIP-1-alpha Protein, MIP1A Protein, SCYA3 Protein,

Description

Source : Yeast

CCL3 is a cytokine belonging to the CC chemokine family. Chemokines are a family of structurally related leukocyte chemoattractant cytokines that play a central role during immunoregulatory and inflammation processes. All chemokines contain four conserved cysteines linked by disulfide bonds, and two major subfamilies, namely CXC and CC, are defined on the basis of the first two cysteines which are separated by one amino acid or are adjacent. CCL3 is involved in the acute inflammatory state in the recruitment and activation of polymorphonuclear leukocytes. Cancer Immunotherapy Immune Checkpoint Immunotherapy Targeted Therapy

Product Info

Amount : Human CCL3 / Mip1a Recombinant Protein (His Tag)(Discontinued) / 50 µg

Purification : > 95 % as determined by SDS-PAGE

Content : Formulation Lyophilized from sterile PBS, pH 7.4.
Normally 5 % - 8 % trehalose, mannitol and 0.01% Tween80 are added as protectants before lyophilization.

Storage condition : Store it under sterile conditions at -20°C to -80°C. It is recommended that the protein be aliquoted for optimal storage. Avoid repeated freeze-thaw cycles.

Amino Acid : Ala23-Ala92

Application Note

Other pack size also available

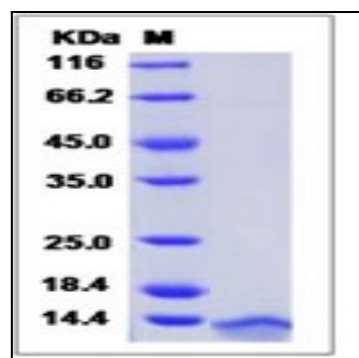


Fig 1: Human CCL3 / Mip1a Recombinant Protein (His Tag)