

37-1277: Human CTLA4 / CD152 Recombinant Protein (Fc Tag)(Discontinued)

Reactivity : Human
Alternative Name : ALPS5 Protein, CD Protein, CD152 Protein, CELIAC3 Protein, CTLA-4 Protein, GRD4 Protein, GSE Protein, IDDM12 Protein,

Description

Source : HEK293 Cells

Cytotoxic T-lymphocyte protein 4, also known as CTLA4 and CD152, is a single-pass type I membrane protein and a member of the immunoglobulin superfamily. It is the second member of the CD28 receptor family. The ligands or counterreceptors for these two proteins are the B7 family members, CD8 (B7-1) and CD86 (B7-2). CTLA4 transmits an inhibitory signal to T cells, whereas CD28 transmits a stimulatory signal. Intracellular CTLA4 is also found in regulatory T cells and may play an important role in their functions. CD152 or cytotoxic T lymphocyte antigen-4 (CTLA-4) is an essential receptor involved in the negative regulation of T cell activation. Because of its profound inhibitory role, CD152 has been considered a sound susceptible candidate in autoimmunity and a persuasive target for cancer immunotherapy. In particular, recent evidence suggests that CD152 is also important in the homeostasis and function of a population of suppressive cells, termed regulatory T cells (Treg). Cancer Immunotherapy Co-inhibitory Immune Checkpoint Targets CTLA4 / CD152 Immune Checkpoint Proteins Immune Checkpoint Immune Checkpoint Detection: Antibodies Immune Checkpoint Detection: ELISA Antibodies Immune Checkpoint Detection: IP Antibodies Immune Checkpoint Detection: WB Antibodies Immune Checkpoint Proteins Immune Checkpoint Targets Immunotherapy Targeted Therapy

Product Info

Amount : Human CTLA4 / CD152 Recombinant Protein (Fc Tag)(Discontinued) / 200 µg
Purification : > 95 % as determined by SDS-PAGE.
Content : Formulation Lyophilized from sterile PBS, pH 7.4. Normally 5 % - 8 % trehalose, mannitol and 0.01% Tween80 are added as protectants before lyophilization.
Storage condition : Store it under sterile conditions at -20°C to -80°C. It is recommended that the protein be aliquoted for optimal storage. Avoid repeated freeze-thaw cycles.
Amino Acid : Met1-Phe162

Application Note

Endotoxin :< 1.0 EU per µg protein as determined by the LAL method.

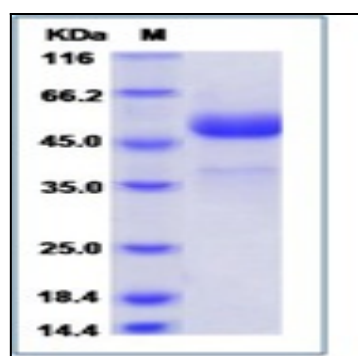


Fig 1: Human CTLA4 / CD152 Recombinant Protein (Fc Tag)