

## 37-1268: Human CCL15 / MIP-5 / MIP-1 delta Recombinant Protein (aa 22-113, His Tag)(Discontinued)

**Reactivity :** Human  
HCC-2 Protein, HMRP-2B Protein, LKN-1 Protein, LKN1 Protein, MIP-1 delta Protein, MIP-1D Protein,  
**Alternative Name :** MIP-5 Protein, MRP-2B Protein, NCC-3 Protein, NCC3 Protein, SCYA15 Protein, SCYL3 Protein, SY15 Protein,

### Description

#### Source : E. coli

Chemokines are a family of small chemotactic cytokines, or proteins secreted by cells. Chemokines share the same structure similarities such as small size, and the presence of four cysteine residues in conserved locations in order to form their 3-dimensional shape. Some of the chemokines are considered pro-inflammatory which can be induced to recruit cells of the immune system to a site of infection during an immune response, while others are considered homeostatic and are implied in controlling the migration of cells during normal processes of tissue maintenance and development. There are four members of the chemokine family: C-C kemokines, C kemokines, CXC kemokines and CX3C kemokines. The C-C kemokines have two cysteines nearby the amino terminus. There have been at least 27 distinct members of this subgroup reported for mammals, called C-C chemokine ligands-1 to 28. Chemokine ligand 15 (CCL15), also known as leukotactin-1, MIP5, MIP1 and HCC-2, is a small cytokine belonging to the C-C chemokine family. CCL15 is prevalently expressed in liver, small intestine, colon, and in certain leukocytes and macrophages of the lung. It is chemotactic for neutrophils, monocytes, and lymphocytes and elicits its effects by binding to cell surface chemokine receptors like CCR1 and CCR3.

### Product Info

**Amount :** 113, His Tag)(Discontinued) / 50 µg  
**Purification :** > 95 % as determined by SDS-PAGE  
**Content :** Formulation Lyophilized from sterile PBS, pH 7.4  
Normally 5 % - 8 % trehalose, mannitol and 0.01% Tween80 are added as protectants before lyophilization.  
**Storage condition :** Store it under sterile conditions at -20°C to -80°C. It is recommended that the protein be aliquoted for optimal storage. Avoid repeated freeze-thaw cycles.  
**Amino Acid :** Gln22-Ile113

### Application Note

Other pack size also available

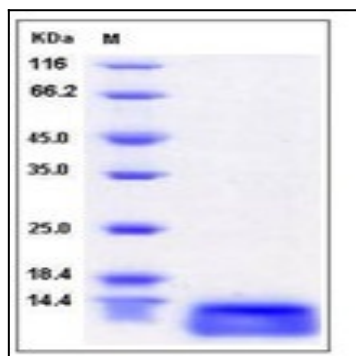


Fig 1: Human CCL15 / MIP-5 / MIP-1 delta Recombinant Protein (aa 22-113, His Tag)