

## 37-1267: Human CD200 Recombinant Protein (Fc Tag)(Discontinued)

**Reactivity :** Human

**Alternative Name :** MOX1 Protein, MOX2 Protein, MRC Protein, OX-2 Protein, OX2 Protein,

### Description

#### Source : HEK293 Cells

CD2 (OX-2) is a cell surface glycoprotein that imparts immune privileges by suppressing alloimmune and autoimmune responses through its receptor, CD2R, expressed primarily on myeloid cells. Signals delivered through the CD2:CD2R axis have been shown to play an important role in the regulation of anti-tumor immunity, and overexpression of CD2 has been reported in a number of malignancies, including CLL, as well as on cancer stem cells. The role of CD2-CD2R signaling in immune regulation of the central nervous system has become a popular field of research in recent years. Many studies have shown that there is a close correlation between CD2-CD2R, microglia activation, and Parkinson's disease (PD). The ability of CD2 to suppress myeloid cell activation is critical for maintaining normal tissue homeostasis but may also enhance the survival of migratory neoplastic cells. CD2 and CD2R associate via their respective N-terminal Ig-like domains. CD2 has been characterized as an important immunoregulatory molecule, increased expression of which can lead to decreased transplant rejection, autoimmunity, and allergic disease. Elevated CD2 expression has been reported to be associated with poor prognosis in a number of human malignancies. In addition, CD2 also plays an important role in prevention of graft rejection, autoimmune diseases and spontaneous abortion. Cancer Immunotherapy Immune Checkpoint Immunotherapy Targeted Therapy

### Product Info

**Amount :** Human CD200 Recombinant Protein (Fc Tag)(Discontinued) / 100 µg

**Purification :** > 95 % as determined by SDS-PAGE.

**Content :** Formulation Lyophilized from sterile PBS, pH 7.4. Normally 5 % - 8 % trehalose, mannitol and 0.01% Tween80 are added as protectants before lyophilization.

**Storage condition :** Store it under sterile conditions at -20°C to -80°C. It is recommended that the protein be aliquoted for optimal storage. Avoid repeated freeze-thaw cycles.

**Amino Acid :** Met1-Gly232

### Application Note

Endotoxin : < 1.0 EU per µg protein as determined by the LAL method.

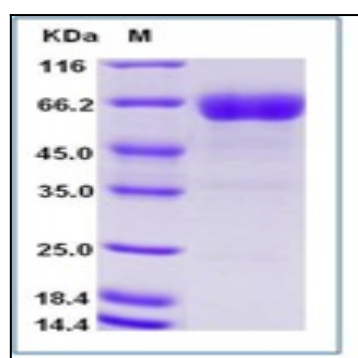


Fig 1: Human CD200 Recombinant Protein (Fc Tag)