

## 37-1248: Human DPP4 / DPPIV / CD26 Recombinant Protein (Fc Tag)(Discontinued)

**Reactivity :** Human

**Alternative Name :** ADABP Protein, ADCP2 Protein, CD26 Protein, DPPIV Protein, TP103 Protein,

### Description

#### Source : HEK293 Cells

Dipeptidyl peptidase-4 (DPP4) or adenosine deaminase complexing protein 2 (ADCP 2) or T-cell activation antigen CD26 is a serine exopeptidase belonging to the S9B protein family that cleaves X-proline dipeptides from the N-terminus of polypeptides, such as chemokines, neuropeptides, and peptide hormones. The enzyme is a type II transmembrane glycoprotein, expressed on the surface of many cell types. It is also present in serum and other body fluids in a truncated form (sCD26/DPPIV). The soluble CD26 (sCD26) as a tumour marker for the detection of colorectal cancer (CRC) and advanced adenomas. As both a regulatory enzyme and a signalling factor, DPP4 has been evaluated and described in many studies. DPP4 inhibition results in increased blood concentration of the incretin hormones glucagon-like peptide-1 (GLP-1) and gastric inhibitory polypeptide (GIP). This causes an increase in glucose-dependent stimulation, resulting in a lowering of blood glucose levels. Recent studies have shown that DPP4 inhibitors can induce a significant reduction in glycosylated haemoglobin (HbA1c) levels, either as monotherapy or as a combination with other antidiabetic agents. Research has also demonstrated that DPP4 inhibitors portray a very low risk of hypoglycaemia development, and are a new pharmacological class of drugs for treating Type 2 diabetes.

### Product Info

**Amount :** Human DPP4 / DPPIV / CD26 Recombinant Protein (Fc Tag)(Discontinued) / 20 µg

**Purification :** > 95 % as determined by SDS-PAGE

**Content :** Formulation Lyophilized from sterile PBS, pH 7.4  
Normally 5 % - 8 % trehalose, mannitol and 0.01% Tween80 are added as protectants before lyophilization.

**Storage condition :** Store it under sterile conditions at -20°C to -80°C. It is recommended that the protein be aliquoted for optimal storage. Avoid repeated freeze-thaw cycles.

**Amino Acid :** Asn29-Pro766

### Application Note

1. Measured by its ability to bind recombinant Cynomolgus CXCL12 in a functional ELISA. 2. Measured by its ability to bind recombinant Human SDF1b in a functional ELISA. 3. Using the Octet RED System, the affinity constant (Kd) of human Fc-DPPIV bound to Spike (HCoV-EMC/2012) was 11 nM. 4. Using the Octet RED System, the affinity constant (Kd) of human Fc-DPPIV bound to Spike (HCoV-EMC/2012) was 32 nM. 5. Using the Octet RED System, the affinity constant (Kd) of human Fc-DPPIV bound to Spike (HCoV-EMC/2012) (ECD, aa 1-1297) was 43 nM. 6. Using the Octet RED System, the affinity constant (Kd) of human Fc-DPPIV bound to Spike-His (aa 1-760) was 12 nM.

Endotoxin : < 1.0 EU per µg of the protein as determined by the LAL method

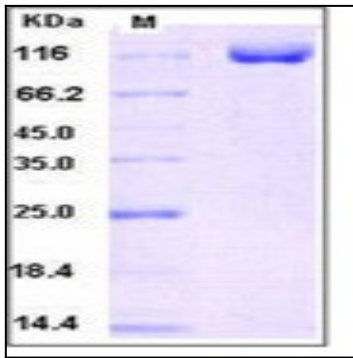


Fig 1: Human DPP4 / DPPIV / CD26 Recombinant Protein (Fc Tag)