

37-1247: Human MEK2 / MAP2K2 / MKK2 Recombinant Protein (GST Tag)(Discontinued)

Reactivity : Human

Alternative Name : CFC4 Protein, FLJ26075 Protein, MAPKK2 Protein, MEK2 Protein, MKK2 Protein, PRKMK2 Protein,

Description

Source : Baculovirus-Insect Cells

Dual specificity mitogen-activated protein kinase kinase 2, also known as MAP kinase kinase 2, MAPKK2, ERK activator kinase 2, MAPK / ERK kinase 2, MEK2 and MAP2K2, is a member of the protein kinase superfamily, STE Ser/Thr protein kinase family and MAP kinase kinase subfamily. MAP2K2 / MEK2 contains one protein kinase domain. MEK1 and MEK2 (also known as MAP2K1 and MAP2K2, respectively) are evolutionarily conserved, dual-specificity kinases that mediate Erk1 and Erk2 activation during adhesion and growth factor signaling. MAP2K1 / MEK1 is a crucial modulator of Mek and Erk signaling and have potential implications for the role of MEK1 and MEK2 in tumorigenesis. MAP2K2 / MEK2 catalyzes the concomitant phosphorylation of a threonine and a tyrosine residue in a Thr-Glu-Tyr sequence located in MAP kinases. It also activates the ERK1 and ERK2 MAP kinases. Defects in MAP2K2 are a cause of cardiofaciocutaneous syndrome (CFC syndrome) which is characterized by a distinctive facial appearance, heart defects and mental retardation. Heart defects include pulmonic stenosis, atrial septal defects and hypertrophic cardiomyopathy. Cancer Immunotherapy Immune Checkpoint Immunotherapy Targeted Therapy

Product Info

Amount : Human MEK2 / MAP2K2 / MKK2 Recombinant Protein (GST Tag)(Discontinued) / 50 µg

Purification : > 92 % as determined by SDS-PAGE

Content : Formulation Lyophilized from sterile 20mM Tris, 500mM NaCl, 2mM GSH, pH 7.4
Normally 5 % - 8 % trehalose, mannitol and 0.01% Tween80 are added as protectants before lyophilization.

Storage condition : Store it under sterile conditions at -20°C to -80°C. It is recommended that the protein be aliquoted for optimal storage. Avoid repeated freeze-thaw cycles.

Amino Acid : Met1-Val400

Application Note

Endotoxin : < 1.0 EU per µg of the protein as determined by the LAL method

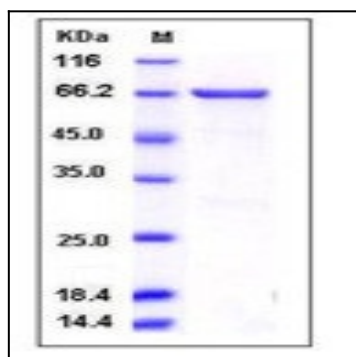


Fig 1: Human MEK2 / MAP2K2 / MKK2 Recombinant Protein (GST Tag)