

37-1231: Human Carboxypeptidase B1 / CPB1 Recombinant Protein (His Tag)(Discontinued)

Reactivity : Human
Alternative Name : CPB Protein, PASP Protein, PCPB Protein,

Description

Source : HEK293 Cells

Carboxypeptidase B1, also well known as pancreatic procarboxypeptidase B (PCPB), is a highly pancreas -specific protein (PASP), and has been identified previously as a serum marker for acute pancreatitis and pancreatic graft rejection. As the prototype for those human exopeptidases that cleave off basic C-terminal residues, CPB1 specifically cleaves the C-terminal Arg and Lys residues with a preference for Arg. The B1 and B2 forms of procarboxypeptidase B differ from each other mainly in isoelectric point. The deduced amino acid sequence of PCPB predicts a 416-amino acid preproenzyme consisting of a 15-aa signal peptide, a 95-aa activation peptide and a 37-aa mature chain. The secreted PCPB zymogen is converted to enzymatically active CPB1 by limited proteolysis by trypsin.

Product Info

Amount : Human Carboxypeptidase B1 / CPB1 Recombinant Protein (His Tag)(Discontinued) / 20 µg
Purification : > 98 % as determined by SDS-PAGE
Content : Formulation Lyophilized from sterile 25mM MES, 0.1 M NaCl, pH 6.5
Normally 5 % - 8 % trehalose, mannitol and 0.01% Tween80 are added as protectants before lyophilization.
Storage condition : Store it under sterile conditions at -20°C to -80°C. It is recommended that the protein be aliquoted for optimal storage. Avoid repeated freeze-thaw cycles.
Amino Acid : Met1-Tyr417

Application Note

Measured by its ability to cleave a colorimetric peptide substrate, Hippuryl-Arg, as measured using the wavelength at 254 nm. The specific activity is >10000 pmoles/min/µg.
Endotoxin :< 1.0 EU per µg of the protein as determined by the LAL method

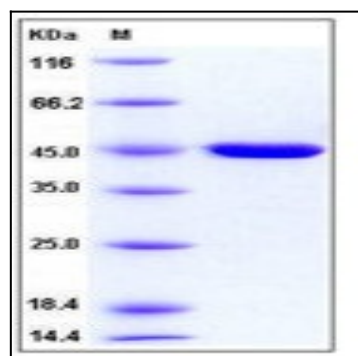


Fig 1: Human Carboxypeptidase B1 / CPB1 Recombinant Protein (His Tag)