

## 37-1215: Human B7-DC / PD-L2 / CD273 / PDCD1LG2 Recombinant Protein (Fc Tag)(Discontinued)

**Reactivity :** Human

**Alternative Name :** B7-DC Protein, B7DC Protein, bA574F11.2 Protein, Btdc Protein, CD273 Protein, PD-L2 Protein, PDCD1L2 Protein, PDL2 Protein,

### Description

#### Source : HEK293 Cells

Programmed death ligand 2 (PD-L2), also referred to as B7-DC and CD273, is a member of the B7 family of proteins including B7-1, B7-2, B7-H2, B7-H1 (PD-L1), and B7-H3. PD-L2 is a type I membrane protein and structurally consists of an extracellular region containing one V-like and one C-like Ig domain, a transmembrane region, and a short cytoplasmic domain. PD-L2 is expressed on antigen presenting cells, placental endothelium and medullary thymic epithelial cells, and can be induced by LPS in B cells, INF- $\gamma$  in monocytes, or LPS plus INF- $\gamma$  in dendritic cells. The CD28 and B7 protein families are critical regulators of immune responses. PD-L2 and PD-L1 are two ligands for PD-1, member of the CD28/CTLA4 family expressed on activated lymphoid cells, and thus provide signals for regulating T cell activation and immune tolerance. The interaction of B7-DC/PD-1 exhibited a 2-6-fold higher affinity compared with the interaction of B7-H1/PD-1. Cancer Immunotherapy Co-inhibitory Immune Checkpoint Targets Immune Checkpoint Immune Checkpoint Detection: Antibodies Immune Checkpoint Detection: ELISA Antibodies Immune Checkpoint Detection: FCM Antibodies Immune Checkpoint Detection: WB Antibodies Immune Checkpoint Proteins Immune Checkpoint Targets Immunotherapy Targeted Therapy

### Product Info

**Amount :** L2 / CD273 / PDCD1LG2 Recombinant Protein (Fc Tag)(Discontinued) / 200  $\mu$ g

**Purification :** > 95 % as determined by SDS-PAGE.

**Content :** Formulation Lyophilized from sterile PBS, pH 7.4. Normally 5 % - 8 % trehalose, mannitol and 0.01% Tween80 are added as protectants before lyophilization.

**Storage condition :** Store it under sterile conditions at -20°C to -80°C. It is recommended that the protein be aliquoted for optimal storage. Avoid repeated freeze-thaw cycles.

**Amino Acid :** Met1-Pro219

### Application Note

1. Measured by its binding ability in a functional ELISA. 2. Immobilized human PD1-His at 10  $\mu$ g/mL (100  $\mu$ L/well) can bind human PDCD1LG2-Fc. The EC<sub>50</sub> of PDCD1LG2-Fc is 0.05-0.12  $\mu$ g/mL. Endotoxin :< 1.0 EU per  $\mu$ g protein as determined by the LAL method.

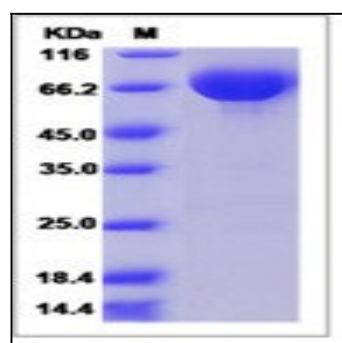


Fig 1: Human B7-DC / PD-L2 / CD273 / PDCD1LG2 Recombinant Protein (Fc Tag)