

37-1205: Human PD-L1 / B7-H1 / CD274 Recombinant Protein (ECD, Fc Tag)(Discontinued)

Reactivity :	Human
Alternative Name :	B7-H Protein, B7-H1 Protein, B7H1 Protein, PD-L1 Protein, PDCD1L1 Protein, PDCD1LG1 Protein, PDL1 Protein,

Description

Source : HEK293 Cells

Programmed death-1 ligand-1 (PD-L1, CD274, B7-H1) has been identified as the ligand for the immunoinhibitory receptor programmed death-1(PD1/PDCD1) and has been demonstrated to play a role in the regulation of immune responses and peripheral tolerance. PD-L1/B7-H1 is a member of the growing B7 family of immune molecules and this protein contains one V-like and one C-like Ig domain within the extracellular domain, and together with PD-L2, are two ligands for PD1 which belongs to the CD28/CTLA4 family expressed on activated lymphoid cells. By binding to PD1 on activated T-cells and B-cells, PD-L1 may inhibit ongoing T-cell responses by inducing apoptosis and arresting cell-cycle progression. Accordingly, it leads to growth of immunogenic tumor growth by increasing apoptosis of antigen specific T cells and may contribute to immune evasion by cancers. PD-L1 thus is regarded as promising therapeutic target for human autoimmune disease and malignant cancers. Cancer Immunotherapy Co-inhibitory Immune Checkpoint Targets Immune Checkpoint Immune Checkpoint Blockade: Blocking Antibodi Immune Checkpoint Blockade: PD-L1 / B7-H1 / C Immune Checkpoint Detection: Antibodies Immune Checkpoint Detection: ELISA Antibodies Immune Checkpoint Detection: FCM Antibodies Immune Checkpoint Detection: ICC Antibodies Immune Checkpoint Detection: IHC Antibodies Immune Checkpoint Detection: WB Antibodies Immune Checkpoint Proteins Immune Checkpoint Targets Immunotherapy PD-L1 / B7-H1 / CD274 Immune Checkpoint Prote Targeted Therapy

Product Info

Amount :	H1 / CD274 Recombinant Protein (ECD, Fc Tag)(Discontinued) / 100 µg
Purification :	> 95 % as determined by SDS-PAGE.
Content :	Formulation Lyophilized from sterile PBS, pH 7.4. Normally 5 % - 8 % trehalose, mannitol and 0.01% Tween80 are added as protectants before lyophilization.
Storage condition :	Store it under sterile conditions at -20°C to -80°C. It is recommended that the protein be aliquoted for optimal storage. Avoid repeated freeze-thaw cycles.
Amino Acid :	Met1-Thr239

Application Note

Measured by its binding ability in a functional ELISA. Immobilized recombinant Human PD1-His at 10 µg/ml (100 µL/well) can bind human PD-L1 with a linear range of 1.28-20 µg/ml.
Endotoxin :< 1.0 EU per µg protein as determined by the LAL method.

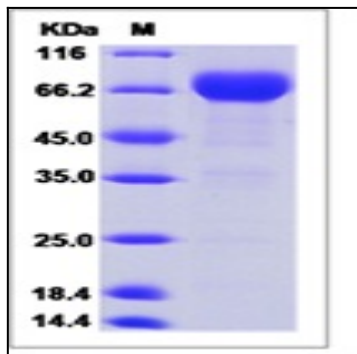


Fig 1: Human PD-L1 / B7-H1 / CD274 Recombinant Protein (ECD, Fc Tag)

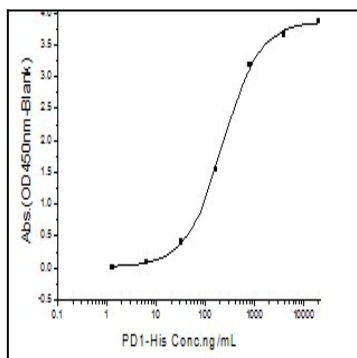


Fig 2: Human PD-L1 / B7-H1 / CD274 Recombinant Protein (ECD, Fc Tag) measured by its binding ability in a functional ELISA.