

37-1197: Mouse M-CSF / CSF-1 Recombinant Protein(Discontinued)

Reactivity : Mouse

Alternative Name : C87615 Protein, Mouse; Csfm Protein, Mouse; MCSF Protein, Mouse; op Protein, Mouse

Description

Source : HEK293 Cells

Macrophage colony-stimulating factor 1, also known as CSF-1, M-CSF, Lanimostim and CSF1, is a single-pass membrane protein which is disulfide-linked as a homodimer or heterodimer. Granulocyte / macrophage colony-stimulating factors are cytokines that act in hematopoiesis by controlling the production, differentiation, and function of 2 related white cell populations of the blood, the granulocytes and the monocytes-macrophages. M-CSF/CSF-1 is known to facilitate monocyte survival, monocyte-to-macrophage conversion, and macrophage proliferation. M-CSF/CSF-1 is a secreted cytokine which influences hemopoietic stem cells to differentiate into macrophages or other related cell types. It binds to the Colony stimulating factor 1 receptor. M-CSF/CSF-1 may also be involved in development of the placenta. The active form of M-CSF/CSF-1 is found extracellularly as a disulfide-linked homodimer, and is thought to be produced by proteolytic cleavage of membrane-bound precursors. M-CSF/CSF-1 induces cells of the monocyte/macrophage lineage. It also plays a role in immunological defenses, bone metabolism, lipoproteins clearance, fertility and pregnancy. Upregulation of M-CSF/CSF-1 in the infarcted myocardium may have an active role in healing not only through its effects on cells of monocyte/macrophage lineage, but also by regulating endothelial cell chemokine expression.

Product Info

Amount : 1 Recombinant Protein(Discontinued) / 20 µg

Purification : > 95 % as determined by SDS-PAGE

Content : Formulation Lyophilized from sterile PBS, pH 7.4. Normally 5 % - 8 % trehalose, mannitol and 0.01% Tween80 are added as protectants before lyophilization.

Storage condition : Store it under sterile conditions at -20°C to -80°C. It is recommended that the protein be aliquoted for optimal storage. Avoid repeated freeze-thaw cycles.

Amino Acid : Met1-Glu262

Application Note

1. Immobilized mouse CSF1 at 10 Åµg/ml (100 ÅµL/well) can bind mouse CSF1R-Fch , The EC50 of mouse CSF1R-Fch is 0.04-0.1 Åµg/ml. 2. Measured in a cell proliferation assay using M-NFS-60 mouse myelogenous leukemia lymphoblast cells. The ED50 for this effect is typically 3-15 ng/ml.

Endotoxin :< 1.0 EU per Åµg of the protein as determined by the LAL method.

Other pack size also available.

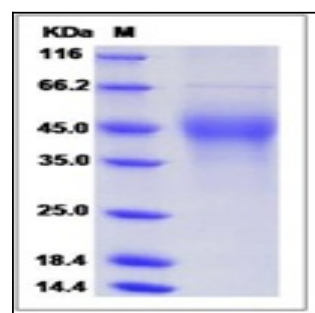


Fig 1: Mouse M-CSF / CSF-1 Recombinant Protein

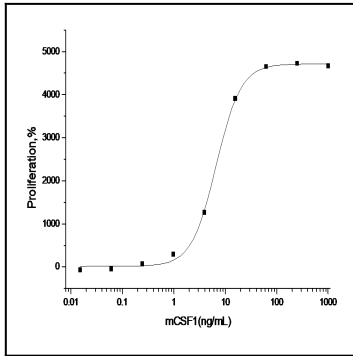


Fig 2: Mouse M-CSF / CSF-1 Recombinant Protein measured in a cell proliferation assay using M-NFS-60 mouse myelogenous leukemia lymphoblast cells.