

37-1188: Mouse CD84 Recombinant Protein (His Tag)(Discontinued)

Reactivity : Mouse

Alternative Name : A130013D22Rik Protein, Mouse; CDw84 Protein, Mouse; SLAMF5 Protein, Mouse

Description

Source : HEK293 Cells

The CD2 family receptors are type I transmembrane glycoproteins belonging to immunoglobulin (Ig) superfamily characterized by a membrane-proximal Ig constant 2 (C2) domain and a membrane-distal variable (V) domain that is responsible for ligand recognition. CD84, also known as LY9B and SLAMF5, is a homophilic member of the SLAM (signaling lymphocyte activation molecule) subfamily of the CD2 family. The SLAM family receptors mediate signal transduction through the interaction of its ITSM (immunoreceptor tyrosine-based switch motifs) in the intracellular region and the SH2 domain of adaptor molecules SAP (SLAM-associated protein) and EAT-2 (EWS-activated transcript 2), and accordingly modulate both adaptive and innate immune responses. The CD84-CD84 interaction was independent of its cytoplasmic tail. Thus, CD84 is its own ligand and acts as a costimulatory molecule. CD84 is expressed on cells from almost all hematopoietic lineages and on CD34+ hematopoietic progenitor cells, suggesting that CD84 serves as a marker for committed hematopoietic progenitor cells.

Product Info

Amount : Mouse CD84 Recombinant Protein (His Tag)(Discontinued) / 100 µg

Purification : > 97 % as determined by SDS-PAGE

Content : Formulation Lyophilized from sterile PBS, pH 7.4
Normally 5 % - 8 % trehalose, mannitol and 0.01% Tween80 are added as protectants before lyophilization.

Storage condition : Store it under sterile conditions at -20°C to -80°C. It is recommended that the protein be aliquoted for optimal storage. Avoid repeated freeze-thaw cycles.

Amino Acid : Met1-Val221

Application Note

Measured by its ability to bind biotinylated recombinant human SH2D1A in a functional ELISA.

Endotoxin : < 1.0 EU per µg of the protein as determined by the LAL method

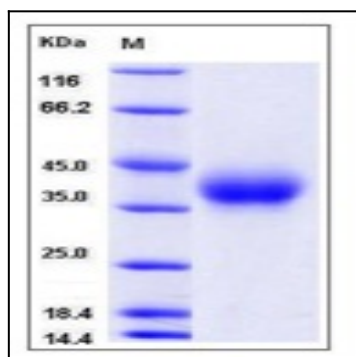


Fig 1: Mouse CD84 Recombinant Protein (His Tag)