

## 37-1185: Mouse CD68 Recombinant Protein (His Tag)(Discontinued)

**Reactivity :** Mouse

**Alternative Name :** gp110 Protein, Mouse; Lamp4 Protein, Mouse; Scard1 Protein, Mouse

### Description

#### Source : Baculovirus-Insect Cells

Macrosialin, also known as CD68 and Gp11, is a single-pass type I membrane protein which belongs to the LAMP family. CD68 is highly expressed by blood monocytes and tissue macrophages. It is also expressed in lymphocytes, fibroblasts and endothelial cells. CD68 is expressed in many tumor cell lines which could allow them to attach to selectins on vascular endothelium, facilitating their dissemination to secondary sites. CD68 plays a role in phagocytic activities of tissue macrophages, both in intracellular lysosomal metabolism and extracellular cell-cell and cell-pathogen interactions. It is a commonly used marker for macrophages. However, a number of studies have shown that CD68 antibodies react with other hematopoietic and non-hematopoietic cell types, suggesting that CD68 may not be a macrophage-specific antigen. CD68 binds to tissue- and organ-specific lectins or selectins, allowing homing of macrophage subsets to particular sites. Rapid recirculation of CD68 from endosomes and lysosomes to the plasma membrane may allow macrophages to crawl over selectin-bearing substrates or other cells.

### Product Info

**Amount :** Mouse CD68 Recombinant Protein (His Tag)(Discontinued) / 100 µg

**Purification :** > 90 % as determined by SDS-PAGE.

**Content :** Formulation Lyophilized from sterile 20 mM Tris, 150 mM NaCl, pH 8.0, 10 % glycerol. Normally 5 % - 8 % trehalose, mannitol and 0.01% Tween80 are added as protectants before lyophilization.

**Storage condition :** Store it under sterile conditions at -20°C to -80°C. It is recommended that the protein be aliquoted for optimal storage. Avoid repeated freeze-thaw cycles.

**Amino Acid :** Met1-Ser291

### Application Note

Endotoxin : < 1.0 EU per µg protein as determined by the LAL method.

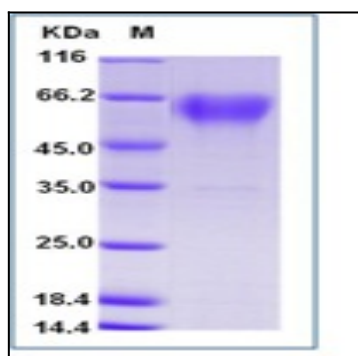


Fig 1: Mouse CD68 Recombinant Protein (His Tag)