

## 37-1158: Mouse ALCAM / CD166 Recombinant Protein (His & Fc Tag)(Discontinued)

**Reactivity :** Mouse

**Alternative Name :** AI853494 Protein, Mouse; BEN Protein, Mouse; CD166 Protein, Mouse; DM-GRASP Protein, Mouse; MuSC Protein, Mouse; SC1 Protein, Mouse

### Description

#### Source : HEK293 Cells

Activated leukocyte cell adhesion molecule (ALCAM)/Cluster of differentiation (CD166) is a type I transmembrane cell adhesion molecule belonging to the Ig superfamily and a ligand for CD6 that is expressed on T lymphocytes. The extracellular domain of ALCAM contains five Ig-like domains (three Ig-like C2-type domains and two Ig-like V-type domains), of which the amino-terminal V1 domain is essential for ligand binding and ALCAM-mediated cell aggregation. ALCAM mediates both heterophilic (ALCAM-CD6) and homophilic (ALCAM-ALCAM) cell-cell interactions. ALCAM/CD6 interaction plays a role in T cell development and T cell regulation, as well as in the binding of T- and B-cells to activated leukocytes. Recently, homophilic (ALCAM-ALCAM) adhesion was shown to play important roles in tight cell-to-cell interaction and regulation of stem cell differentiation. While expressed in a wide variety of tissues, ALCAM is usually restricted to subsets of cells involved in dynamic growth and/or migration, including neural development, branching organ development, hematopoiesis, immune response and tumor progression. And CD166 is regarded as a potential novel breast cancer indicator and therapeutic target.

### Product Info

**Amount :** Mouse ALCAM / CD166 Recombinant Protein (His & Fc Tag)(Discontinued) / 100 µg

**Purification :** > 95 % as determined by SDS-PAGE

**Content :** Formulation Lyophilized from sterile PBS, pH 7.4  
Normally 5 % - 8 % trehalose, mannitol and 0.01% Tween80 are added as protectants before lyophilization.

**Storage condition :** Store it under sterile conditions at -20°C to -80°C. It is recommended that the protein be aliquoted for optimal storage. Avoid repeated freeze-thaw cycles.

**Amino Acid :** Met1-Lys527

### Application Note

Immobilized mouse CD6-His at 10 Åµg/ml (100 ÅµL/well) can bind mouse ALCAM-Fc2h, The EC50 of mouse ALCAM-Fc2h is 0.12-0.28 Åµg/ml.

Endotoxin :< 1.0 EU per Åµg of the protein as determined by the LAL method

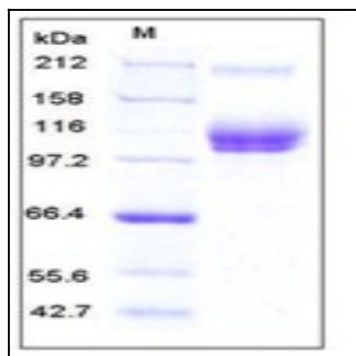


Fig 1: Mouse ALCAM / CD166 Recombinant Protein (His & Fc Tag)