

37-1157: Mouse ALK-6 / BMPR1B Recombinant Protein (Fc Tag)(Discontinued)

Reactivity : Mouse

Acvrlk6 Protein, Mouse; Al385617 Protein, Mouse; ALK-6 Protein, Mouse; Alk6 Protein, Mouse;

Alternative Name : AV355320 Protein, Mouse; BMPR-1B Protein, Mouse; BMPR-1B Protein, Mouse; CFK-43a Protein, Mouse; SKR6 Protein, Mouse

Description

Source : HEK293 Cells

BMPR1B(bone morphogenetic protein receptor, type IB), also known as ALK6, is a member of the bone morphogenetic protein (BMP) receptor family. BMPs are involved in endochondral bone formation and embryogenesis. These proteins transduce their signals through the formation of heteromeric complexes of 2 different types of serine (threonine) kinase receptors: type I receptors of about 5-55 kD and type II receptors of about 7-8 kD. Type II receptors bind ligands in the absence of type I receptors, but they require their respective type I receptors for signaling, whereas type I receptors require their respective type II receptors for ligand binding. BMPR1B is the major transducer of signals in precartilaginous condensations as demonstrated in experiments using constitutively active BMPR1B receptors. BMPR1B is a more effective transducer of GDF5 than BMPR1A. Unlike BMPR1A null mice, which die at an early embryonic stage, BMPR1B null mice are viable.

Product Info

Amount : 6 / BMPR1B Recombinant Protein (Fc Tag)(Discontinued) / 100 µg

Purification : > (88.3+9.9) % as determined by SDS-PAGE.

Formulation Lyophilized from sterile PBS, pH 7.4.

Content : Normally 5 % - 8 % trehalose, mannitol and 0.01% Tween80 are added as protectants before lyophilization.

Storage condition : Store it under sterile conditions at -20°C to -80°C. It is recommended that the protein be aliquoted for optimal storage. Avoid repeated freeze-thaw cycles.

Amino Acid : Lys14-Lys126

Application Note

Endotoxin :< 1.0 EU per µg protein as determined by the LAL method.

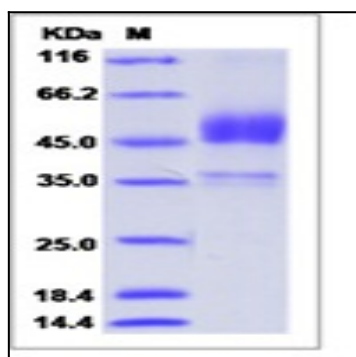


Fig 1: Mouse ALK-6 / BMPR1B Recombinant Protein (Fc Tag)

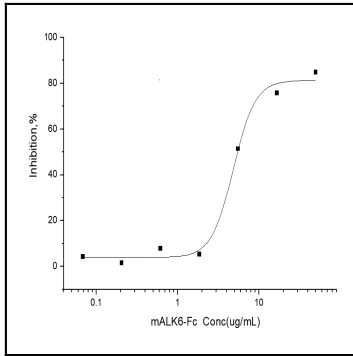


Fig 2: Mouse ALK-6 Recombinat Protein mesured by functional ELISA