

37-1142: Human CD33 / Siglec-3 Recombinant Protein (Fc Tag)(Discontinued)

Reactivity : Human

Alternative Name : p67 Protein, Siglec-3 Protein, SIGLEC3 Protein,

Description

Source : HEK293 Cells

Myeloid cell surface antigen CD33 also known as Sialic acid binding Ig-like lectin 3, CD33 antigen or Siglec-3, is a member of the immunoglobulin superfamily and SIGLEC (sialic acid binding Ig-like lectin) family. This Single-pass type I membrane protein contains 1 Ig-like C2-type (immunoglobulin-like) domain and 1 Ig-like V-type (immunoglobulin-like) domain. CD33 /Siglec-3 is a putative adhesion molecule of myelomonocytic-derived cells that mediates sialic-acid dependent binding to cells. CD33 /Siglec-3 preferentially binds to alpha-2,6-linked sialic acid. The sialic acid recognition site may be masked by cis interactions with sialic acids on the same cell surface. In the immune response, may act as an inhibitory receptor upon ligand induced tyrosine phosphorylation by recruiting cytoplasmic phosphatase(s) via their SH2 domain(s) that block signal transduction through dephosphorylation of signaling molecules. CD33/Siglec-3 induces apoptosis in acute myeloid leukemia (in vitro). CD33/Siglec-3 can function as a sialic acid-dependent cell adhesion molecule and that binding can be modulated by endogenous sialoglycoconjugates when CD33 is expressed in a plasma membrane. Cancer Immunotherapy Immune Checkpoint Immunotherapy Targeted Therapy

Product Info

Amount : 3 Recombinant Protein (Fc Tag)(Discontinued) / 100 µg

Purification : > 90 % as determined by SDS-PAGE

Content : Formulation Lyophilized from sterile PBS, pH 7.4.
Normally 5 % - 8 % trehalose, mannitol and 0.01% Tween80 are added as protectants before lyophilization.

Storage condition : Store it under sterile conditions at -20°C to -80°C. It is recommended that the protein be aliquoted for optimal storage. Avoid repeated freeze-thaw cycles.

Amino Acid : Met1-His259

Application Note

Endotoxin : < 1.0 EU per µg of the protein as determined by the LAL method

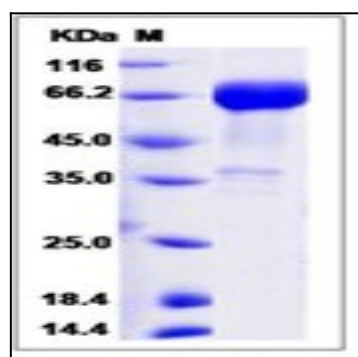


Fig 1: Human CD33 / Siglec-3 Recombinant Protein (Fc Tag)