

37-1138: Human KIT / c-KIT / CD117 Recombinant Protein (aa 50-190, His Tag)(Discontinued)

Reactivity : Human

Alternative Name : C-Kit Protein, CD117 Protein, PBT Protein, SCFR Protein,

Description

Source : E. coli

C-Kit is a type 3 transmembrane receptor for MGF (mast cell growth factor, also known as stem cell factor). c-Kit contains 5 Ig-like C2-type (immunoglobulin-like) domains and 1 protein kinase domain. It belongs to the protein kinase superfamily, tyrosine protein kinase family and CSF-1/PDGF receptor subfamily. C-Kit contains 5 Ig-like C2-type (immunoglobulin-like) domains and 1 protein kinase domain. C-Kit has a tyrosine-protein kinase activity. Binding of the ligands leads to the autophosphorylation of KIT and its association with substrates such as phosphatidylinositol 3-kinase. Antibodies to c-Kit are widely used in immunohistochemistry to help distinguish particular types of tumour in histological tissue sections. It is used primarily in the diagnosis of GISTs. In GISTs, c-Kit staining is typically cytoplasmic, with stronger accentuation along the cell membranes. C-Kit antibodies can also be used in the diagnosis of mast cell tumours and in distinguishing seminomas from embryonal carcinomas. Mutations in c-Kit gene are associated with gastrointestinal stromal tumors, mast cell disease, acute myelogenous leukemia, and piebaldism. Defects in KIT are a cause of acute myelogenous leukemia (AML). AML is a malignant disease in which hematopoietic precursors are arrested in an early stage of development. Note= Somatic mutations that lead to constitutive activation of KIT are detected in AML patients. Cancer Immunotherapy Immune Checkpoint Immunotherapy Targeted Therapy

Product Info

Amount : 190, His Tag)(Discontinued) / 100 µg

Purification : > 90 % as determined by SDS-PAGE

Content : Formulation Lyophilized from sterile 137mM NaCl, 2.7mM KCl, 10mM Na₂HPO₄, 8mM KH₂PO₄, 15% glycerol, pH 2.7. Normally 5 % - 8 % trehalose, mannitol and 0.01% Tween80 are added as protectants before lyophilization.

Storage condition : Store it under sterile conditions at -20°C to -80°C. It is recommended that the protein be aliquoted for optimal storage. Avoid repeated freeze-thaw cycles.

Amino Acid : Val50-Gln190

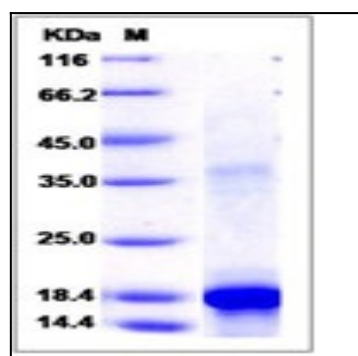


Fig 1: Human KIT / c-KIT / CD117 Recombinant Protein (aa 50-190, His Tag)