

## 37-1136: Human FSH Beta / FSHB Recombinant Protein (His Tag)(Discontinued)

**Reactivity :** Human  
**Alternative Name :** HH24 Protein,

### Description

#### Source : HEK293 Cells

Follicle-stimulating hormone (FSH) is a gonadotrope-derived heterodimeric glycoprotein. FSH plays an essential role in processes involved in human reproduction, including spermatogenesis and the ovarian cycle. FSHB represents a conservative vertebrate gene with a unique function and it is located in a structurally stable gene-poor region. Polymorphisms in the follicle stimulating hormone beta subunit (FSHB) and follicle stimulating hormone receptor (FSHR) genes might disturb normal spermatogenesis and affect male reproductive ability. The FSHB -211G>T genotype is a key determinant in the regulation of gonadotropins in different reproductive-endocrine pathophysiology.

### Product Info

**Amount :** Human FSH Beta / FSHB Recombinant Protein (His Tag)(Discontinued) / 50 µg  
**Purification :** > 90 % as determined by SDS-PAGE.  
**Content :** Formulation Lyophilized from sterile PBS, pH 7.4. Normally 5 % - 8 % trehalose, mannitol and 0.01% Tween80 are added as protectants before lyophilization.  
**Storage condition :** Store it under sterile conditions at -20°C to -80°C. It is recommended that the protein be aliquoted for optimal storage. Avoid repeated freeze-thaw cycles.  
**Amino Acid :** Met1-Glu129

### Application Note

Endotoxin :< 1.0 EU per µg protein as determined by the LAL method.

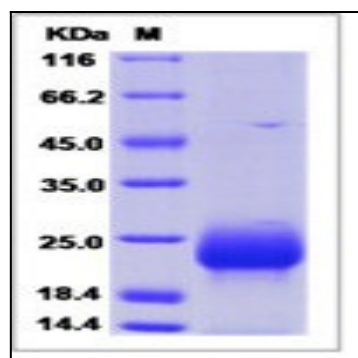


Fig 1: Human FSH Beta / FSHB Recombinant Protein (His Tag)