

37-1133: Human CD28 Recombinant Protein (Fc Tag)(Discontinued)

Reactivity : Human
Alternative Name : Tp44 Protein,

Description

Source : HEK293 Cells

CD28 (Cluster of Differentiation 28) is a disulphide-bonded glycoprotein belonging to the immunoglobulin (Ig) superfamily, and structurally consists of a single Ig V-like extracellular domain, a transmembrane domain and an intracellular domain. Mouse CD28 is constitutively expressed on the surface of all murine T cells and on developing thymocytes as disulfide-linked homodimers or as monomers. CD28 can binds the B7-1 and B7-2 ligand, and together perform important functions in the T and B cell response pathways. B7/CD28 family members, which can augment or antagonize T-cell receptor signaling, in the regulation of central and peripheral T-cell tolerance. CD28 is thus involved in T-cell activation, the induction of cell proliferation and cytokine production and promotion of T-cell survival. Cancer Immunotherapy Co-stimulatory Immune Checkpoint Targets Immune Checkpoint Immune Checkpoint Detection: Antibodies Immune Checkpoint Detection: ELISA Antibodies Immune Checkpoint Detection: FCM Antibodies Immune Checkpoint Detection: IHC Antibodies Immune Checkpoint Detection: WB Antibodies Immune Checkpoint Targets Immunotherapy Targeted Therapy

Product Info

Amount : Human CD28 Recombinant Protein (Fc Tag)(Discontinued) / 200 µg
Purification : > 90 % as determined by SDS-PAGE
Content : Formulation Lyophilized from sterile PBS, pH 7.4
Normally 5 % - 8 % trehalose, mannitol and 0.01% Tween80 are added as protectants before lyophilization.
Storage condition : Store it under sterile conditions at -20°C to -80°C. It is recommended that the protein be aliquoted for optimal storage. Avoid repeated freeze-thaw cycles.
Amino Acid : Met1-Pro152

Application Note

Endotoxin : < 1.0 EU per µg of the protein as determined by the LAL method

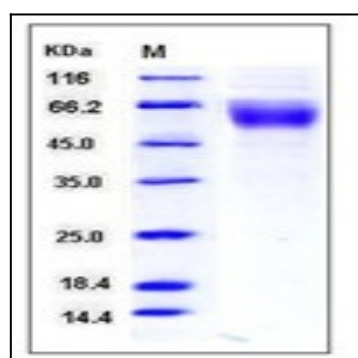


Fig 1: Human CD28 Recombinant Protein (Fc Tag)