

37-1116: Human XCL1 Recombinant Protein (His Tag)(Discontinued)

Reactivity : Human
Alternative Name : ATAC Protein, LPTN Protein, LTN Protein, SCM-1 Protein, SCM-1a Protein, SCM1 Protein, SCM1A Protein, SCYC1 Protein,

Description

Source : Baculovirus-Insect Cells

This antimicrobial gene encodes a member of the chemokine superfamily. Chemokines function in inflammatory and immunological responses, inducing leukocyte migration and activation. The encoded protein is a member of the C-chemokine subfamily, retaining only two of four cysteines conserved in other chemokines, and is thought to be specifically chemotactic for T cells. This gene and a closely related family member are located on the long arm of chromosome 1. Cancer Immunotherapy Immune Checkpoint Immunotherapy Targeted Therapy

Product Info

Amount : Human XCL1 Recombinant Protein (His Tag)(Discontinued) / 50 µg
Purification : > 85 % as determined by SDS-PAGE
Content : Formulation Lyophilized from sterile PBS, pH 7.4
Normally 5 % - 8 % trehalose, mannitol and 0.01% Tween80 are added as protectants before lyophilization.
Storage condition : Store it under sterile conditions at -20°C to -80°C. It is recommended that the protein be aliquoted for optimal storage. Avoid repeated freeze-thaw cycles.
Amino Acid : Met1-Gly114

Application Note

Endotoxin :< 1.0 EU per µg of the protein as determined by the LAL method.
Other pack size also available.

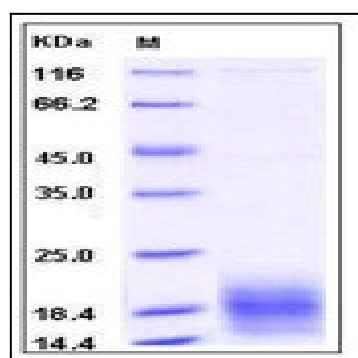


Fig 1: Human XCL1 Recombinant Protein (His Tag)