

37-1108: Human ICAM-1 / CD54 Recombinant Protein (His Tag)(Discontinued)

Reactivity : Human

Alternative Name : BB2 Protein, CD54 Protein, ICAM-1 Protein, P3.58 Protein,

Description

Source : HEK293 Cells

Intercellular adhesion molecule-1 (ICAM-1, or CD54) is a 9 kDa member of the immunoglobulin (Ig) superfamily and is critical for the firm arrest and transmigration of leukocytes out of blood vessels and into tissues. ICAM-1 is constitutively present on endothelial cells, but its expression is increased by proinflammatory cytokines. The endothelial expression of ICAM-1 is increased in atherosclerotic and transplant-associated atherosclerotic tissue and in animal models of atherosclerosis. Additionally, ICAM-1 has been implicated in the progression of autoimmune diseases. ICAM-1 is a ligand for LFA-1(integrin). When activated, leukocytes bind to endothelial cells via ICAM-1/LFA-1 interaction and then transmigrate into tissues. Presence with heavy glycosylation and other structural characteristics, ICAM-1 possesses binding sites for a number of immune-associated ligands and serves as the binding site for entry of the major group of human Rhinovirus (HRV) into various cell types. ICAM-1 also becomes known for its affinity for Plasmodium falciparum-infected erythrocytes (PFIE), providing more of a role in infectious disease. Previous studies have shown that ICAM-1 is involved in inflammatory reactions and that a defect in ICAM-1 gene inhibits allergic contact hypersensitivity.

Product Info

Amount : 1 / CD54 Recombinant Protein (His Tag)(Discontinued) / 50 µg

Purification : > 98 % as determined by SDS-PAGE

Content : Formulation Lyophilized from sterile PBS, pH 7.4
Normally 5 % - 8 % trehalose, mannitol and 0.01% Tween80 are added as protectants before lyophilization.

Storage condition : Store it under sterile conditions at -20°C to -80°C. It is recommended that the protein be aliquoted for optimal storage. Avoid repeated freeze-thaw cycles.

Amino Acid : Met1-Glu480

Application Note

Measured by the ability of the immobilized protein to support the adhesion of PMA-stimulated HSB2 human peripheral blood acute lymphoblastic leukemia cells. When cells are added to ICAM1-coated plates (12.5 Åµg/ml, 100 ÅµL/well), approximately 30%-60% will adhere specifically.

Endotoxin :< 1.0 EU per Åµg of the protein as determined by the LAL method

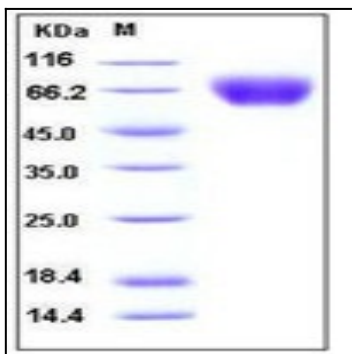


Fig 1: Human ICAM-1 / CD54 Recombinant Protein (His Tag)