

37-1092: Human HER3 / ErbB3 Recombinant Protein (Fc Tag)(Discontinued)

Reactivity : Human

Alternative Name : c-erbB-3 Protein, c-erbB3 Protein, EEBB3 Protein, ErbB-3 Protein, erbB3-S Protein, HER3 Protein, LCCS2 Protein, MDA-BF-1 Protein, p180-ErbB3 Protein, p45-sErbB3 Protein, p85-sErbB3 Protein,

Description

Source : HEK293 Cells

ErbB3, also known as Her3(human epidermal growth factor receptor3), is a member of the epidermal growth factor receptor (EGFR) family of receptor tyrosine kinases. This membrane-bound glycoprotein has a neuregulin binding domain but has not an active kinase domain., and therefore can not mediate the intracellular signal transduction through protein phosphorylation. However, its heterodimer with ErbB2 or other EGFR members responsible for tyrosine phosphorylation forms a receptor complex with high affinity, and initiates the related pathway which lead to cell proliferation or differentiation. ErbB3 has been shown to implicated in numerous cancers, including prostate, bladder, and breast tumors. This protein has different isoforms derived from alternative splicing variants, and among which, the secreted isoform lacking the intermembrane region modulates the activity of membrane-bound form. Cancer Immunotherapy Immune Checkpoint Immunotherapy Targeted Therapy

Product Info

Amount : Human HER3 / ErbB3 Recombinant Protein (Fc Tag)(Discontinued) / 100 µg

Purification : > 90 % as determined by SDS-PAGE

Content : Formulation Lyophilized from sterile PBS, pH 7.4
Normally 5 % - 8 % trehalose, mannitol and 0.01% Tween80 are added as protectants before lyophilization.

Storage condition : Store it under sterile conditions at -20°C to -80°C. It is recommended that the protein be aliquoted for optimal storage. Avoid repeated freeze-thaw cycles.

Amino Acid : Met1-Thr643

Application Note

Measure by its ability to bind with human NRG1-beta1 in a functional ELISA.

Endotoxin :< 1.0 EU per µg of the protein as determined by the LAL method.

Other pack size also available.

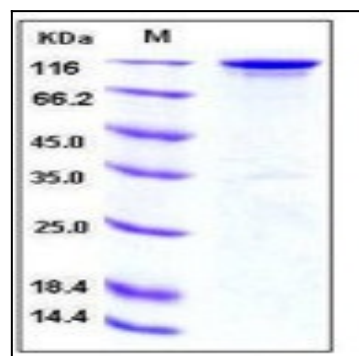


Fig 1: Human HER3 / ErbB3 Recombinant Protein (Fc Tag)