

## 37-1087: Human S100A2 Recombinant Protein(Discontinued)

**Reactivity :** Human  
**Alternative Name :** CAN19 Protein, S100L Protein,

### Description

#### Source : E. coli

The calcium-binding Protein S1A2 is a member of the S1 family of proteins containing 2 EF-hand calcium-binding motifs. S1 family genes are located as a cluster on chromosome 1q21, and S1 proteins consisting of at least 2 members are involved in the regulation of a number of cellular processes such as cell-cycle progression and cell differentiation. S1A2 was first detected in lung and kidney, and is mainly expressed in a subset of tissues and cells such as breast epithelia and liver. The S1A2 protein is a homodimer that undergoes a conformational change upon binding of calcium, and the active form functions in regulating cell proliferation and differentiation, gene transcription, and p53-dependent growth arrest and apoptosis. Accordingly, this protein is regarded as a putative tumor suppressor, and thus chromosomal rearrangements and reduced expression of S1A2 gene have been implicated in certain carcinomas.

### Product Info

**Amount :** Human S100A2 Recombinant Protein(Discontinued) / 100 µg  
**Purification :** > 95 % as determined by SDS-PAGE  
**Content :** Formulation Lyophilized from sterile PBS, pH 7.4  
Normally 5 % - 8 % trehalose, mannitol and 0.01% Tween80 are added as protectants before lyophilization.  
**Storage condition :** Store it under sterile conditions at -20°C to -80°C. It is recommended that the protein be aliquoted for optimal storage. Avoid repeated freeze-thaw cycles.  
**Amino Acid :** Met2-Pro98

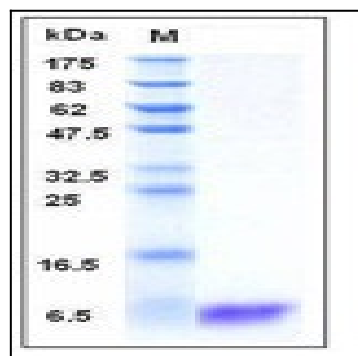


Fig 1: Human S100A2 Recombinant Protein