

37-1076: Human CD31 / PECAM1 Recombinant Protein (Fc Tag)(Discontinued)

Reactivity :	Human
Alternative Name :	CD31 Protein, CD31/EndoCAM Protein, endoCAM Protein, GPIIA' Protein, PECA1 Protein, PECAM-1 Protein,

Description

Source : HEK293 Cells

The Cluster of Differentiation 31 (CD31) adhesion molecule, also known as platelet-endothelial cell adhesion molecule-1 (PECAM-1), is the only known member of the CAM family on platelets. CD31 protein is a 13-kDa transmembrane glycoprotein expressed by endothelial cells, platelets, monocytes, neutrophils, and certain T cell subsets. CD31 protein is also expressed in certain tumors, including epithelioid hemangioendothelioma, other vascular tumors, and histiocytic malignancies. CD31 plays a key role in removing aged neutrophils and tissue regeneration. CD31 protein mediates the homotypic or heterotypic cell adhesion by binding to itself or the leukocyte integrin $\alpha v \beta 3$, and thus plays a role in neutrophil recruitment in inflammatory responses, transendothelial migration of leukocytes, as well as in cardiovascular development.

Product Info

Amount :	Human CD31 / PECAM1 Recombinant Protein (Fc Tag)(Discontinued) / 200 μ g
Purification :	> 95 % as determined by SDS-PAGE
Content :	Formulation Lyophilized from sterile 100mM Glycine, 10mM NaCl, 50mM Tris, pH 7.5 Normally 5 % - 8 % trehalose, mannitol and 0.01% Tween80 are added as protectants before lyophilization.
Storage condition :	Store it under sterile conditions at -20°C to -80°C. It is recommended that the protein be aliquoted for optimal storage. Avoid repeated freeze-thaw cycles.
Amino Acid :	Met1-Lys601

Application Note

Measured by the ability of the immobilized protein to support the adhesion of Jurkat human acute T cell leukemia cells. When 8×10^4 cells/well are added to sCD31-Fc coated plates (1.25 μ g/mL, 100 μ L/well) in the presence of 20ng/mL PMA, approximately 20-45% will adhere after 30 minutes at 37°C.

Endotoxin :< 1.0 EU per μ g of the protein as determined by the LAL method

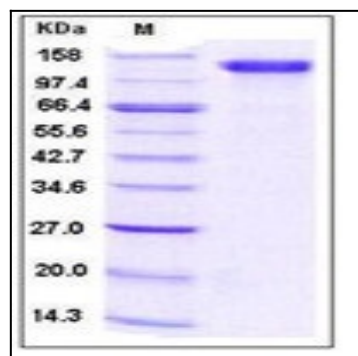


Fig 1: Human CD31 / PECAM1 Recombinant Protein (Fc Tag)