

37-1074: Human CD171 / N-CAML1 / L1CAM Recombinant Protein (His Tag)(Discontinued)

Reactivity : Human
Alternative Name : CAML1 Protein, CD171 Protein, HSAS Protein, HSAS1 Protein, MASA Protein, MIC5 Protein, N-CAM-L1 Protein, N-CAML1 Protein, NCAM-L1 Protein, S10 Protein, SPG1 Protein,

Description

Source : HEK293 Cells

L1 cell adhesion molecule (L1CAM), also designated as CD171, is a cell adhesion receptor of the immunoglobulin superfamily, known for its roles in nerve cell function. While originally believed to be present only in brain cells, in recent years L1-CAM has been detected in other tissues, and in a variety of cancer cells, including some common types of human cancer. L1CAM interacts with a variety of ligands including axonin-1, CD9, neurocan and integrins, and it has been revealed that the RGD motif in the sixth Ig domain of L1CAM is a binding site for integrins, thus important for nuclear signaling. Disruption of L1CAM function causes three X-linked neurological syndromes, i.e. hydrocephalus, MASA syndrome (mental retardation, aphasia, shuffling gait and adducted thumbs) and spastic paraplegia syndrome. Overexpression of L1CAM in normal and cancer cells increased motility, enhanced growth rate and promoted cell transformation and tumorigenicity. Recent work has identified L1CAM (CD171) as a novel marker for human carcinoma progression, and a candidate for anti-cancer therapy.

Product Info

Amount : CAML1 / L1CAM Recombinant Protein (His Tag)(Discontinued) / 200 µg
Purification : > 85 % as determined by SDS-PAGE
Content : Formulation Lyophilized from sterile PBS, pH 7.4
Normally 5 % - 8 % trehalose, mannitol and 0.01% Tween80 are added as protectants before lyophilization.
Storage condition : Store it under sterile conditions at -20°C to -80°C. It is recommended that the protein be aliquoted for optimal storage. Avoid repeated freeze-thaw cycles.
Amino Acid : Met1-Glu1120

Application Note

Endotoxin :< 1.0 EU per µg of the protein as determined by the LAL method

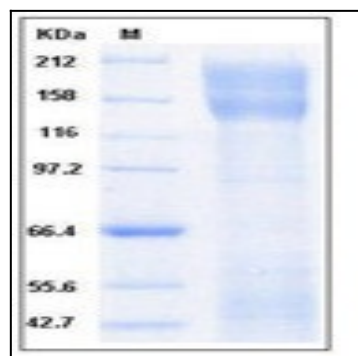


Fig 1: Human CD171 / N-CAML1 / L1CAM Recombinant Protein (His Tag)