

37-1061: Human GAPDH Recombinant Protein (His Tag)(Discontinued)

Reactivity : Human

Alternative Name : G3PD Protein, GAPD Protein, HEL-S-162eP Protein,

Description

Source : E. coli

Glyceraldehyde 3-phosphate dehydrogenase (GAPDH or G3PDH) is an enzyme of about 37kDa that is considered as a cellular enzyme involved in glycolysis. It catalyzes the sixth step of glycolysis. Glyceraldehyde-3-phosphate dehydrogenase (GAPDH) is a pleiotropic enzyme that is overexpressed in apoptosis and in several human chronic pathologies. Its role as a mediator for cell death has also been highlighted. A recent report suggests that GAPDH may be genetically associated with late-onset of Alzheimer's disease. Besides, deprenyl, which has originally been used as a monoamine oxidase inhibitor for Parkinson's disease, binds to GAPDH and displays neuroprotective actions.

Product Info

Amount : Human GAPDH Recombinant Protein (His Tag)(Discontinued) / 100 µg

Purification : > 93 % as determined by SDS-PAGE

Content : Formulation Lyophilized from sterile 50mM Tris, 30% glycerol, pH 7.5
Normally 5 % - 8 % trehalose, mannitol and 0.01% Tween80 are added as protectants before lyophilization.

Storage condition : Store it under sterile conditions at -20°C to -80°C. It is recommended that the protein be aliquoted for optimal storage. Avoid repeated freeze-thaw cycles.

Amino Acid : Met1-Glu335

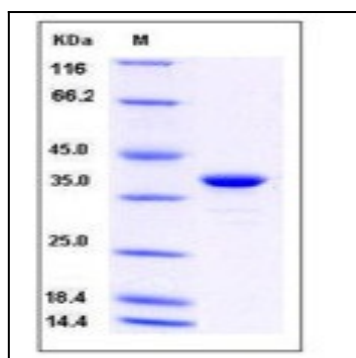


Fig 1: Human GAPDH Recombinant Protein (His Tag)