

37-1040: Human VCL / Vinculin Recombinant Protein (His Tag)(Discontinued)

Reactivity : Human

Alternative Name : CMD1W Protein, CMH15 Protein, HEL114 Protein, MV Protein, MVCL Protein,

Description

Source : HEK293 Cells

Vinculin (VCL) is a cytoskeletal protein that is closely related to both cell-matrix interactions and cell-cell junctions. VCL is a membrane-cytoskeletal protein in focal adhesion plaques that is involved in linkage of integrin adhesion molecules to the actin cytoskeleton. The protein contains an acidic N-terminal domain and a basic C-terminal domain separated by a proline-rich middle segment. This protein has multi-ligand properties and has been found to interact with a number of microfilament associated proteins, such as talin, α -actinin, and paxillin, which reportedly bind to either the head or tail domains of vinculin.

Product Info

Amount : Human VCL / Vinculin Recombinant Protein (His Tag)(Discontinued) / 50 μ g

Purification : > 90 % as determined by SDS-PAGE

Content : Formulation Lyophilized from sterile PBS, pH 7.4
Normally 5 % - 8 % trehalose, mannitol and 0.01% Tween80 are added as protectants before lyophilization.

Storage condition : Store it under sterile conditions at -20°C to -80°C. It is recommended that the protein be aliquoted for optimal storage. Avoid repeated freeze-thaw cycles.

Amino Acid : Met1-Gln1066

Application Note

Endotoxin :< 1.0 EU per μ g of the protein as determined by the LAL method

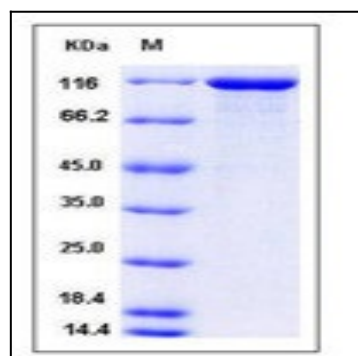


Fig 1: Human VCL / Vinculin Recombinant Protein (His Tag)