

## 37-1024: Human CD20 / MS4A1 Recombinant Protein (aa 213-297, His Tag)(Discontinued)

**Reactivity :** Human  
**Alternative Name :** B1 Protein, Bp35 Protein, CD20 Protein, CVID5 Protein, LEU-16 Protein, MS4A1 Protein, MS4A2 Protein, S7 Protein,

### Description

#### Source : HEK293 Cells

CD20 (membrane-spanning 4-domains, subfamily A, member 1), also known as MS4A1, is a member of the membrane-spanning 4A gene family. Members of this nascent protein family are characterized by common structural features and similar intron/exon splice boundaries and display unique expression patterns among hematopoietic cells and nonlymphoid tissues. CD20 / MS4A1 is expressed on all stages of B cell development except the first and last. CD20 / MS4A1 is present from pre-pre B cells through memory cells, but not on either pro-B cells or plasma cells. It is a B-lymphocyte surface molecule which plays a role in the development and differentiation of B-cells into plasma cells. CD20 / MS4A1 may be involved in the regulation of B-cell activation and proliferation. Defects in CD20 / MS4A1 are the cause of immunodeficiency common variable type 5(CVID5). CVID5 is a primary immunodeficiency characterized by antibody deficiency, hypogammaglobulinemia, recurrent bacterial infections and an inability to mount an antibody response to antigen. The defect results from a failure of B-cell differentiation and impaired secretion of immunoglobulins; the numbers of circulating B-cells is usually in the normal range, but can be low. Cancer Immunotherapy Immune Checkpoint Immunotherapy Targeted Therapy

### Product Info

**Amount :** 297, His Tag)(Discontinued) / 20 µg  
**Purification :** > 83 % as determined by SDS-PAGE  
**Content :** Formulation Lyophilized from sterile PBS, pH 7.4  
Normally 5 % - 8 % trehalose, mannitol and 0.01% Tween80 are added as protectants before lyophilization.  
**Storage condition :** Store it under sterile conditions at -20°C to -80°C. It is recommended that the protein be aliquoted for optimal storage. Avoid repeated freeze-thaw cycles.  
**Amino Acid :** Glu213-Pro297

### Application Note

Endotoxin :< 1.0 EU per µg of the protein as determined by the LAL method

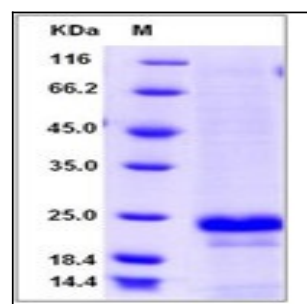


Fig 1: Human CD20 / MS4A1 Recombinant Protein (aa 213-297, His Tag)