

36-1586: Monoclonal Antibody to Prolactin Receptor (hPRL-Receptor)(B6.2 + PRLR742)

Clonality :	Monoclonal
Clone Name :	B6.2 + PRLR742
Application :	IHC
Reactivity :	Human
Gene :	PRLR
Gene ID :	5618
Uniprot ID :	P16471
Format :	Purified
Alternative Name :	PRLR
Isotype :	Mouse IgG1, kappa + Mouse IgG1, kappa
Immunogen Information :	Semi-purified human prolactin receptor (B6.2); Recombinant human prolactin receptor (PRLR742)

Description

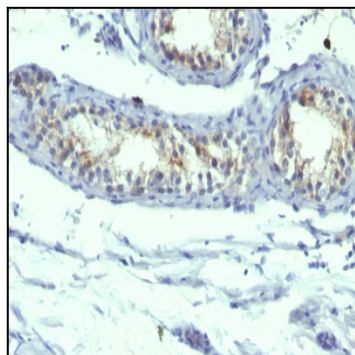
It recognizes a protein of 70kDa, identified as prolactin receptor. Prolactin is a pituitary hormone involved in the stimulation of milk production, salt and water regulation, growth, development and reproduction. The initial step in its action is the binding to a specific membrane receptor (prolactin receptor), which belongs to the superfamily of class 1 cytokine receptors. The function of the prolactin receptor is mediated, at least in part, by two families of signaling molecules: Janus kinases and signal transducers and activators of transcription.

Product Info

Amount :	100 µg
Purification :	Affinity Chromatography
Content :	100 µg in 500 µl PBS containing 0.05% BSA and 0.05% sodium azide. Sodium azide is highly toxic.
Storage condition :	Store the antibody at 4°C; stable for 6 months. For long-term storage; store at -20°C. Avoid repeated freeze and thaw cycles.

Application Note

Immunohistochemistry (Formalin-fixed) (1-2ug/ml for 30 minutes at RT)(Staining of formalin-fixed tissues requires heating tissue sections in 10mM Tris with 1mM EDTA, pH 9.0, for 45 min at 95°C followed by cooling at RT for 20 minutes);



Formalin-fixed, paraffin-embedded human Testicular Carcinoma stained with Prolactin Receptor Monoclonal Antibody (B6.2 + PRLR742).