

## 44-1182: Anti-Stathmin Monoclonal Antibody (Clone:IHC667)-Ready to Use

<b>Clonality :</b>	Monoclonal
<b>Clone Name :</b>	IHC667
<b>Application :</b>	IHC
<b>Reactivity :</b>	Human
<b>Gene :</b>	STMN1
<b>Gene ID :</b>	3925
<b>Uniprot ID :</b>	P16949
<b>Format :</b>	Predilute
<b>Alternative Name :</b>	STMN1, C1orf215, LAP18, OP18, Metablastin, Oncoprotein 18, Prosolin, Protein Pr22, pp17

### Description

Stathmin regulates microtubule dynamics in the cell cycle. It is present in all tissues, but is mostly pronounced in constantly proliferating cell types. Since Anti-Stathmin staining has been found to correlate with cervical intraepithelial neoplasia (CIN) grade, CIN 3 presents the greatest expression and CIN1 displays the least expression of stathmin.

### Product Info

<b>Amount :</b>	7 ml
<b>Purification :</b>	Protein A/G Chromatography
<b>Storage condition :</b>	Store at 2°C - 8°C.

### Application Note

This product is available in ready to use format, hence no dilution is required.

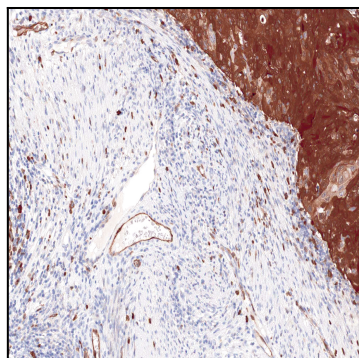


Figure 1: Immunohistochemical analysis of Stathmin (IHC667) on Cervical Cancer