

44-1172: Anti-Napsin A Monoclonal Antibody (Clone:IHC635)-Ready to Use

Clonality :	Monoclonal
Clone Name :	IHC635
Application :	IHC
Reactivity :	Human
Gene :	NAPSA
Gene ID :	9476
Uniprot ID :	O96009
Alternative Name :	NAP1, NAPA, Aspartyl protease 4, ASP4, Asp 4, Napsin-1, TA01/TA02

Description

Napsin A is a pepsin-like aspartic proteinase, closely related to Napsin B, expressed mainly in the lung and kidney and which is involved in the correct folding, targeting, and control of aspartic proteinase zymogens. Napsin A expression has been indicated in type II pneumocytes and adenocarcinomas of the lung and kidney. Anti-Napsin A is also useful for differentiating between primary lung adenocarcinomas and adenocarcinomas of other organs, due to the high specificity expression of Napsin A in adenocarcinomas of the lung.

Product Info

Amount :	7 ml / 25 ml
Purification :	Protein A/G Chromatography
Storage condition :	Store at 2°C - 8°C.

Application Note

This product is available in ready to use format, hence no dilution is required.

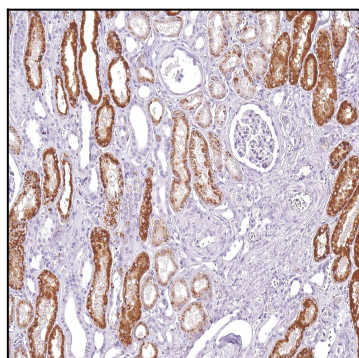


Figure 1: Immunohistochemical analysis of Napsin A (IHC635) on Kidney