

## 44-1163: Anti-LMO2 Monoclonal Antibody (Clone:IHC615)(Discontinued)

<b>Clonality :</b>	Monoclonal
<b>Clone Name :</b>	IHC615
<b>Application :</b>	IHC
<b>Reactivity :</b>	Human
<b>Gene :</b>	LMO2
<b>Gene ID :</b>	4005
<b>Uniprot ID :</b>	P25791
<b>Format :</b>	Purified
<b>Alternative Name :</b>	RBTN2, RBTN1, RHOM2, TTG2, Rhombotin-2, Cysteine-rich protein TTG-2, LIM domain only protein 2, T-cell translocation protein 2

### Description

LMO2, also known as LIM-Only transcription factor 2, RBTN2, or TTG2, is an oncoprotein that is expressed in normal germinal center B-cells, as well as bone marrow hematopoietic precursors and endothelial cells. LMO2 plays a role in angiogenesis and hematopoiesis, and its expression has been detected in erythroid and myeloid precursors, megakaryocytes, and also in lymphoblastic and acute myeloid leukemias. LMO2 protein expression has been noted in diffuse large B-cell lymphoma, the most common adult non-Hodgkin lymphoma, as well as follicular lymphoma, a neoplasm derived from germinal center B-cells that accounts for a number of cases of non-Hodgkin lymphomas.

### Product Info

<b>Amount :</b>	0.1 ml / 1 ml
<b>Purification :</b>	Protein A/G Chromatography
<b>Storage condition :</b>	Store at 2°C - 8°C.

### Application Note

Recommended dilutions: Immunohistochemical analysis: 1:100 - 1:200. However, this need to be optimized based on the research applications.

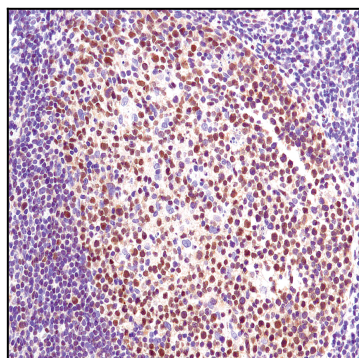


Figure 1: Immunohistochemical analysis of LMO2 (IHC615) on Tonsil