

## 44-1159: Anti-HMB-45 Monoclonal Antibody (Clone:IHC602)

<b>Clonality :</b>	Monoclonal
<b>Clone Name :</b>	IHC602
<b>Application :</b>	IHC
<b>Reactivity :</b>	Human
<b>Gene :</b>	PMEL
<b>Gene ID :</b>	6490
<b>Uniprot ID :</b>	P40967
<b>Format :</b>	Purified
<b>Alternative Name :</b>	PMEL, D12S53E, PMEL17, SILV, Melanocyte protein Pmel 17, Melanocytes lineage-specific antigen GP100, Melanoma-associated ME20 antigen, P1, P100, Premelanosome protein, Silver locus protein homolog

### Description

HMB-45 is specific for an antigen present in immature melanosomes, cutaneous melanocytes, and prenatal and infantile retinal pigment epithelium cells. It is therefore effective for identifying malignant melanoma, and differentiating metastatic amelanotic melanoma from a number of conditions from which the discrimination is often extremely difficult, including large cell lymphomas, sarcomas, spindle cell carcinomas, and various types of mesenchymal neoplasms. This antibody can also differentiate between junctional nevus and intradermal nevus cells, and fetal or neonatal melanocytes versus normal adult melanocytes.

### Product Info

<b>Amount :</b>	0.1 ml / 1 ml
<b>Purification :</b>	Protein A/G Chromatography
<b>Storage condition :</b>	Store at 2°C - 8°C.

### Application Note

Recommended dilutions: Immunohistochemical analysis: 1:100 - 1:200. However, this need to be optimized based on the research applications.

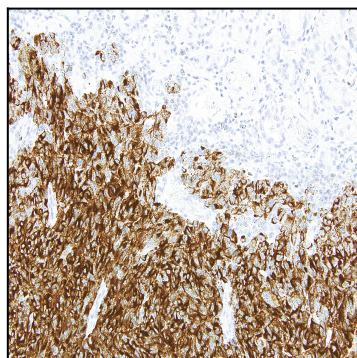


Figure 1: Immunohistochemical analysis of HMB-45 (IHC602) on Melanoma