

44-1155: Anti-hCG Monoclonal Antibody (Clone:IHC593)

Clonality : Monoclonal
Clone Name : IHC593
Application : IHC
Reactivity : Human
Gene : CGA
Gene ID : 1081
Uniprot ID : P01215
Format : Purified

Alternative Name : Glycoprotein hormones alpha chain, Anterior pituitary glycoprotein hormones common subunit alpha, Choriongonadotropin alpha chain, Chorionic gonadotrophin subunit alpha, CG-alpha, Follicle-stimulating hormone alpha chain, FSH-alpha, Follitropin alpha chain, Luteinizing hormone alpha chain, LSH-alpha, Lutropin alpha chain, Thyroid-stimulating hormone alpha chain, TSH-alpha, Thyrotropin alpha chain

Description

Human Chorionic Gonadotropin (hCG) is a glycoprotein hormone produced by the trophoblastic cells of the placenta after conception. Anti-hCG is useful for identifying trophoblastic tumors, such as choriocarcinoma. hCG is also a marker for non-trophoblastic tumors such as large cell carcinoma and lung adenocarcinoma.

Product Info

Amount : 0.1 ml / 1 ml
Purification : Protein A/G Chromatography
Storage condition : Store at 2°C - 8°C.

Application Note

Recommended dilutions: Immunohistochemical analysis: 1:100 - 1:200. However, this need to be optimized based on the research applications.

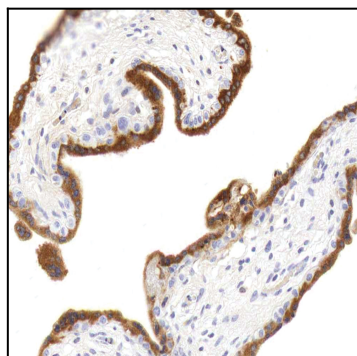


Figure 1: Immunohistochemical analysis of hCG (IHC593) on Placenta