

44-1153: Anti-Glycophorin A Monoclonal Antibody (Clone:IHC587)

Clonality :	Monoclonal
Clone Name :	IHC587
Application :	IHC
Reactivity :	Human
Gene :	GYPA
Gene ID :	2993
Uniprot ID :	P02724
Format :	Purified
Alternative Name :	Blood group--MN locus, GPA, GPErik, GpMIII, GPSAT, GYPA, MN sialoglycoprotein, MNS, PAS2, Sialoglycoprotein alpha

Description

Glycophorin A (GPA) and Glycophorin B (GPB) are erythrocyte blood group determinants that minimize erythrocyte aggregation during the circulation of blood. Anti-Glycophorin A is useful for understanding erythroid cell development and identifying erythroid leukemias.

Product Info

Amount :	0.1 ml / 1 ml
Purification :	Protein A/G Chromatography
Storage condition :	Store at 2°C - 8°C.

Application Note

Recommended dilutions: Immunohistochemical analysis: 1:100 - 1:200. However, this need to be optimized based on the research applications.

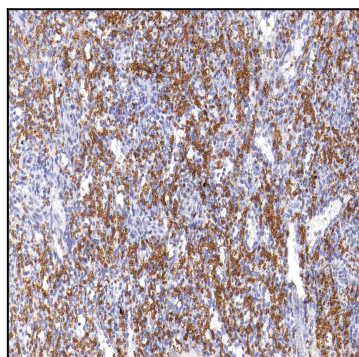


Figure 1: Immunohistochemical analysis of Glycophorin A (IHC587) on Spleen