

## 44-1150: Anti-FSH Monoclonal Antibody (Clone:IHC580)-Ready to Use

|                           |  |
|---------------------------|--|
| <b>Clonality :</b>        | Monoclonal   |
| <b>Clone Name :</b>       | IHC580   |
| <b>Application :</b>      | IHC  |
| <b>Reactivity :</b>       | Human  |
| <b>Gene :</b>             | FSHR   |
| <b>Gene ID :</b>          | 2492   |
| <b>Uniprot ID :</b>       | P23945   |
| <b>Format :</b>           | Predilute  |
| <b>Alternative Name :</b> | Follicle-stimulating hormone receptor, FSH-R, Follitropin receptor, LGR1 |

### Description

Follicle-Stimulating Hormone (FSH) allows for progression of ovarian folliculogenesis, and enables Sertoli cell proliferation in the testis. Anti-FSH reacts with FSH-producing cells, therefore FSH staining is useful for classifying pituitary cancers and understanding pituitary disease.

### Product Info

|                            |                            |
|----------------------------|----------------------------|
| <b>Amount :</b>            | 7 ml                       |
| <b>Purification :</b>      | Protein A/G Chromatography |
| <b>Storage condition :</b> | Store at 2°C - 8°C.        |

### Application Note

This product is available in ready to use format, hence no dilution is required.

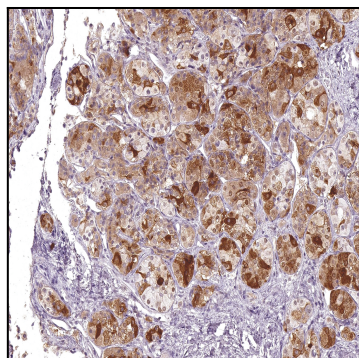


Figure 1: Immunohistochemical analysis of FSH (IHC580) on Pituitary Gland